



# Flight Plan & Site Survey

Created using **RPAS Wilco**®

Reference No:	2616E1
Title:	Club Air Modeliste 278 20240522
Pilot Name:	Alain Carpentier
Pilot Certificate:	[REDACTED]
Flight Start:	May 22, 2024 3:25 PM
Flight End:	May 22, 2024 11:59 PM
Flight Address:	Lat: 46.632163 Lng: -71.546999
Flight Area (Latitude):	46° 37' 55.79" N ( 46.632 )
Flight Area (Longitude):	71° 32' 49.20" W ( -71.547 )
Altitude - Radius:	Alt: 400 ft - Rad: 926.0 m ( 0.5 nm)
Classification:	UNCONTROLLED
FIR - Contact:	CZUL - 506-867-7175

Please ensure you received all required authorizations prior to flight.

## Disclaimer

This Site Survey was created using RPAS Wilco by AIM Robotics. The flight plan contained is intended only for RPAS flights on the date/time and location specified. The user accepts all responsibility for the accuracy and completeness of the information contained.

For the complete Terms & Conditions, see

<https://rpswilco.com/#/tnc>

## Included

- Site Survey
- Obstacles (if available)
- Nearby Aerodromes
- Canadian Aviation Regulations
- GFA
- Aerodrome Supplements
  - METAR & TAF (if available)
  - NOTAMS
  - CFS





## Flight Map



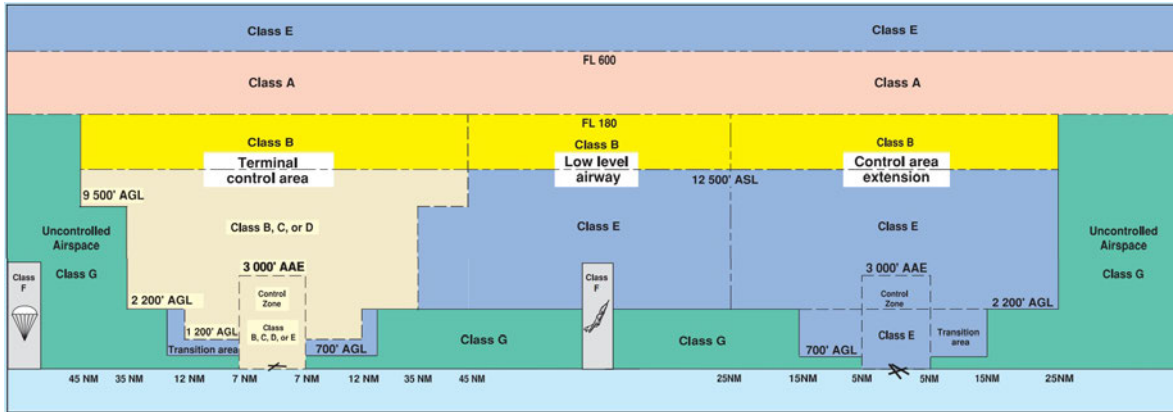
## RPAS Specification

- **Manufacturer:**  
MAAC
- **Model:**  
MODEL AIRPLANE (Apprentice)
- **Registration Number:**  
C-2315325447
- **Eligible for advanced operations:**  
Yes
- **Manufacturer RPAS safety assurance:**
  - Controlled Airspace: YES
  - Near People: NO
  - Over People: NO

## MAP Details

	Latitude	Longitude
 MODEL	46° 37' 55.79" N ( 46.632 )	71° 32' 49.20" W ( -71.547 )
 Pilot	( )	( )
 Payload Op.	( )	( )
 Observer	( )	( )
	Latitude	Longitude
	Latitude	Longitude

## Airspace Classification



## Overlying Airspaces

Class	Name	Floor	Ceiling
C	Qu bec, QC TCA	1500MSL	12500MSL
E	T616 Airway	2200AGL	12500MSL
B	T616 Airway	12500MSL	18000MSL
E	T677 Airway	2200AGL	12500MSL
E	T660 Airway	2200AGL	12500MSL
B	T660 Airway	12500MSL	18000MSL
B	T677 Airway	12500MSL	18000MSL
B	T781 Airway	12500MSL	18000MSL
E	T781 Airway	2200AGL	12500MSL
B	Qu bec/Jean Lesage Intl, QC TA	12500MSL	18000MSL
E	Qu bec/Jean Lesage Intl, QC TA	2200AGL	12500MSL
E	Montreal FIR CAE	6000MSL	12500MSL
B	Montreal FIR CAE	12500MSL	18000MSL

## Nearest Aerodromes & Distance from Operation

ST-APOLLINAIRE (AIRPRO) (CAA4 - AERODROME - Reg)	Lat: 46.587	Long: -71.561	5.135KM	2.77NM	S
NEUVILLE (CNV9 - AERODROME - Reg)	Lat: 46.723	Long: -71.582	10.448KM	5.64NM	N
LAC ST-AUGUSTIN (CSN8 - WATERDROME - Cert)	Lat: 46.751	Long: -71.394	17.629KM	9.52NM	NE
JEAN LESAGE INTL (CYQB - AERODROME - Cert)	Lat: 46.791	Long: -71.393	21.209KM	11.45NM	NE
CAPITALE HELICOPTERE INC (CCH7 - HELIPORT - Cert)	Lat: 46.801	Long: -71.374	22.943KM	12.39NM	NE

**QUEBEC**

**AERODROME/FACILITY DIRECTORY**

**ST-APOLLINAIRE (AIRPRO) QC**

**CAA4**

<b>REF</b>	N46 35 13 W71 33 40 2.6WSW 16°W (2016) UTC-5(4) Elev 380' aprx A5002	
<b>OPR</b>	AirProGyro 418-580-8912/881-1550 Reg PPR	
<b>PF</b>	C-1,2,3,4,5 D-6,7,8	
<b>FLT PLN</b>	(bil)	
<b>FIC</b>	Québec 866-GOMÉTÉO or 866-WXBRIEF (Toll free within Canada) or 866-541-4105 (Toll free within Canada & USA)	
<b>RWY DATA</b>	Rwy 14(143°)/32(323°) 2360x30 GRASS	
<b>RCR</b>	Opr Ltd win maint	
<b>COMM</b>		
<b>ATF</b>	tfc 123.2 4NM 1500 ASL excluding Québec TCA	
<b>CAUTION</b>	Trees aprx 60 AGL mid-field along either side of rwy. Possible paramotor activities SW of A/D (along Marigot side). Class C airspace from 1500 ASL, see Quebec VTPC. P-lines on apch Rwy 14.	

## QUEBEC

## AERODROME/FACILITY DIRECTORY

## QUÉBEC / NEUVILLE QC

CNV9

<b>REF</b>	N46 43 24 W71 34 57 1.1NE 16°W (2012) UTC-5(4) Elev 314' A5002 LO6 LO7 LO8 T2	
<b>OPR</b>	NeuvilleAero 418-476-8001 Reg PPR 12-02Z† Mon-Fri, 13-02Z† Sat-Sun and hols	
<b>PF</b>	B-1 C-2,3,4,5,6	
<b>FLT PLN</b>	(bil)	
<b>FIC</b>	Québec 866-GOMÉTÉO or 866-WXBRIEF (Toll free within Canada) or 866-541-4105 (Toll free within Canada & USA) or 418-871-8678	
<b>ACC</b>	Montreal 514-633-3211 or 800-633-1353, all Flt Plns, IFR tng PPR	
<b>SERVICES</b>		
<b>FUEL</b>	100LL, JA PN	
<b>OIL</b>	All	
<b>S</b>	1,4,5,6	
<b>RWY DATA</b>	Rwy 06(064°)/24(244°) 3000x75 ASPH/GRVL Centre 50' ASPH Rwy 24 down 0.7%	
<b>RCR</b>	Opr	
<b>LIGHTING</b>	06-(TE LO), 24-(TE LO) ARCAL-123.35 type J	
<b>COMM</b>		
<b>ATF</b>	UNICOM ltd hrs O/T tfc123.35 5NM below 1500 ASL outside CYQB CZ and Québec TCA and excluding the portion south of the St. Lawrence River.	
<b>TWR</b>	Québec 118.65 236.6 (E)	
<b>TML</b>	Québec 124.0 VFR 127.85 IFR 322.8	
<b>PRO</b>	<p>Note: Acft oprs planning to arr or dep the A/D shall take note of the Québec VTPC and the info on Québec class C airspace; they shall also ctc the OPR in order to obtain auth (PPR) rqr'd in order to be made aware of the arr and dep procedures developed in coordination with Québec tml and Québec/Jean Lesage TWR.</p> <p><b>Preferential rwy:</b> Rwy 06 for tkof. Rwy 24 for ldg.</p> <p><b>Circuits:</b> Right hand circuits Rwy 24 (CAR 602.96).</p> <p><b>Touch and go:</b> No touch and go without prior permission from operator.</p> <p><b>VFR Codes:</b> In order to minimize delays, ATC freq congestion and for better airspace management, as well as to improve safety, ctc the Montreal ACC at 877-YUL-CODE (877-985-2633), or the FIC at 1-866-GOMETEO or 1-866-WX BRIEF, to provide ATC with info pertaining to your flt to obtain your transponder code at least 30 min prior to a flight into Québec Class C airspace.</p>	
<b>CAUTION</b>	<p><b>Inst apch at CYQB:</b> Acft flying to Québec / Jean Lesage Intl aprt (CZ 1.8NM ENE of Neuville A/D) on inst apch Rwy 06 can overfly Neuville A/D at 2000ASL. Possibility of deer on the rwy and vic of A/D. Trees 60 AGL final Rwy 24.</p> <p>Blasting area 0.5NM radius N46 42 41 W71 35 02 (aprx 0.7NM S of A/D) sfc to 828 ASL (500 AGL), May-Oct ocsl by NOTAM.</p>	

# CANADA WATER AERODROME SUPPLEMENT

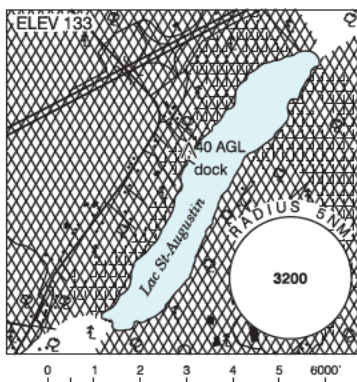
Effective 0901Z 21 March 2024 to 0901Z 17 April 2025

AERODROME/FACILITY DIRECTORY B197

## QUÉBEC/LAC ST-AUGUSTIN QC

CSN8

<b>REF</b>	N46 45 05 W71 23 39 6SW 17°W UTC-5(4) Elev 133' A5002
<b>OPR</b>	Luc Forgues 418-955-4455 Cert PPR
<b>PF</b>	B-1,2,3,7 C-4,5,6
<b>FLT PLN</b>	(bil) <b>FIG</b> Québec 866-GOMÉTÉO or 866-WXBRIEF (Toll free within Canada) or 866-541-4105 (Toll free within Canada & USA)
<b>SERVICES</b>	
<b>FUEL</b>	100LL 24 hrs PN
<b>S</b>	4,5,6
<b>A/D DATA</b>	Open water May-Oct.

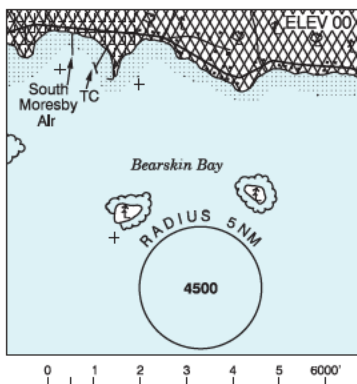


<b>COMM</b>	(bil) <b>RADIO</b> Québec 123.55 (Above 12,500 ASL) 126.7 <b>ATIS</b> 134.6 128.3 <b>GND</b> Québec 121.9 <b>TWR</b> Québec 118.65 236.6 (E) at land A/D 2NM N
<b>NAV</b>	
<b>VORTAC</b>	QUEBEC YQB 112.8 Ch75 N46 42 19 W71 37 35
<b>PRO</b>	Touch & go forbidden. See Québec/Lac St-Augustin VTPC for effective Noise Operating Restrictions & Noise Abatement Procedures. Ctc Québec gnd prior tkof. If unable, call Québec twr at 418-871-7814.
<b>CAUTION</b>	Land A/D 2NM N.

## QUEEN CHARLOTTE CITY BC

CAQ6

<b>REF</b>	N53 15 W132 04 Adj E 19°E (2012) UTC-8(7) Elev 00' A5013
<b>OPR</b>	Queen Charlotte City Harbour Authority 250-559-4650 Reg
<b>PF</b>	C-1 D-3,5,6
<b>FLT PLN</b>	<b>FIG</b> Kamloops 866-WXBRIEF (Toll free within Canada) or 866-541-4101 (Toll free within Canada & USA)
<b>SERVICES</b>	
<b>FUEL</b>	100LL 250-559-4222 PN
<b>S</b>	7
<b>A/D DATA</b>	Tidal range 25', depth 6', rock & mud bottom. Ramp aprx 2NM E. Restricted area behind breakwater. Dock fees ctc Opr.



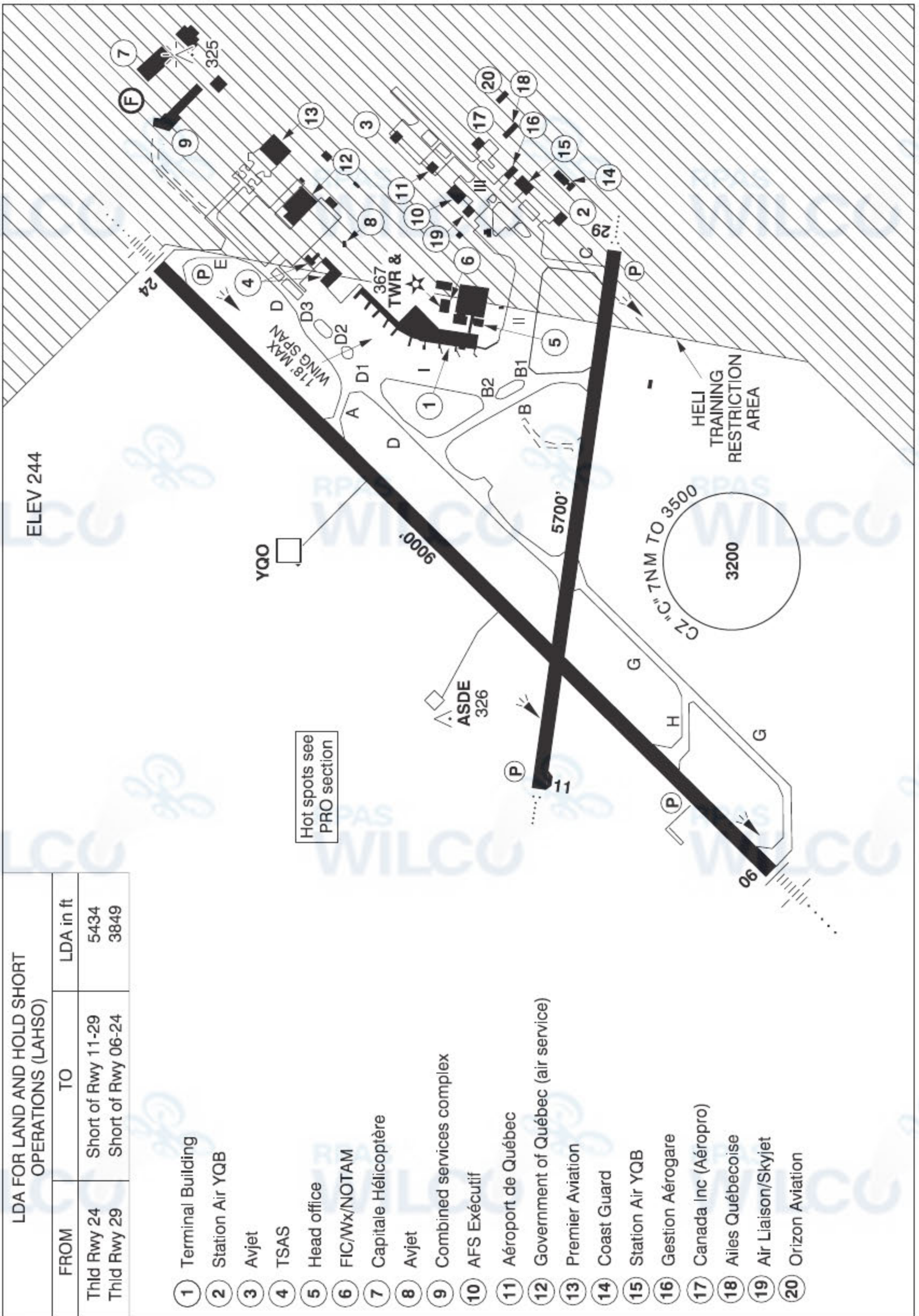
<b>COMM</b>	<b>ATF</b> tfc 123.2 5NM 3000 ASL See PRO section
-------------	---

QUEBEC

AERODROME/FACILITY DIRECTORY

QUÉBEC / JEAN LESAGE INTL QC

CYQB



LDA FOR LAND AND HOLD SHORT OPERATIONS (LAHSO)		
FROM	TO	LDA in ft
Thld Rwy 24	Short of Rwy 11-29	5434
Thld Rwy 29	Short of Rwy 06-24	3849

- 1 Terminal Building
- 2 Station Air YQB
- 3 Avjet
- 4 TSAS
- 5 Head office
- 6 FIC/Mx/NOTAM
- 7 Capitale Hélicoptère
- 8 Avjet
- 9 Combined services complex
- 10 AFS Exécutif
- 11 Aéroport de Québec
- 12 Government of Québec (air service)
- 13 Premier Aviation
- 14 Coast Guard
- 15 Station Air YQB
- 16 Gestion Aéroport
- 17 Canada Inc (Aéropro)
- 18 Ailes Québécoise
- 19 Air Liaison/Skyjet
- 20 Orizon Aviation

REF	N46 47 28 W71 23 36 6WSW 16°W (2013) UTC-5(4) Elev 244' A5002 LO6 LO7 LO8 HI5 HI6 T2 CAP OC
OPR	Aéroport de Québec Inc 418-640-0707 H24 Cert Mil (Mil PN 72 hrs)
PF	A-2,3,6 10-05Z† A-1 C-4,5

## QUEBEC

## AERODROME/FACILITY DIRECTORY

## QUÉBEC / JEAN LESAGE INTL QC (Cont'd)

CYQB

<b>CUST</b>	AOE 888-226-7277 H24 Dec 1-Apr 30, 13-05Z‡ May 1-Nov 30
<b>FLT PLN</b>	(bil)
<b>FIC</b>	Québec 866-GOMÉTÉO or 866-WXBRIEF (Toll free within Canada) or 866-541-4105 (Toll free within Canada & USA) or 418-871-8678
<b>ACC</b>	Montreal 514-633-3211 or 800-633-1353, all Flt Plns, IFR tng PPR
<b>WX</b>	METAR H24. TAF H24, issue times: 00, 06, 12, 18Z.
<b>SERVICES</b>	Call out chg may be levied for one or more svcs
<b>FUEL</b>	100LL, JA-1
<b>OIL</b>	All
<b>S</b>	1,2,4,5,6
<b>ARFF</b>	DESIGNATED CAT 7
<b>SUP FL</b>	D & A-ice
<b>JASU</b>	Elect Start 10/15
<b>PVT ADV</b>	Avjet 123.0/122.95 10-02Z‡ 418-871-1958; TSAS 122.9 10-03Z‡ Mon-Fri, 1000-0230Z‡ Sat-Sun 418-877-6708, 888-592-3835; Services Aériens du Québec ctc dispatch 129.625 prior to arr and dep 20 min PPR; Air Liaison/Skyjet 129.17 11-15Z‡ 2030-2300Z‡ Mon-Fri 418-872-0999; AFS Exécutif 122.475 10-02Z‡ 418-877-4419; Les Ailes Québécoises Inc. 129.85; Lux FBO 122.825 10-03Z‡ 418-649-8999
<b>MIL CON</b>	Avjet Distributions Inc. 418-871-1958
<b>RWY DATA</b>	Rwy 06(061°)/24(241°) 9000x150 ASPH Rwy 24 up 0.3% Rwy 11(114°)/29(294°) 5700x150 ASPH
<b>RWY CERT</b>	Rwy 06 RVR 1200(1/4sm)/Rwy 24 RVR 1200(1/4sm) AGN V Rwy 11/29 AGN IIIB
<b>TWY CERT</b>	Twy: A, H AGN IV Twy C AGN IIIB
<b>APRON</b>	Apron I: Btwn stand 33-37 rstd to taxiing acft with wingspan less than 118'. Apron II and III rstd to taxiing acft with wingspan less than 118'. Acft with wingspan 118' or greater must be towed. No parking on apron III. Parking proh without perms 418-640-0707.
<b>RCR</b>	Opr 13-21Z‡ Mon-Fri May 1-Oct 31, H24 Nov 1-Apr 30. CRFI, PLR/PCN
<b>LIGHTING</b>	06-AN(TE HI) P3, 24-AN(TE HI) P3, 11-AO(TE ME) P2 offset 12° to the S, 29-AO(TE ME) P2
<b>COMM</b>	(bil)
<b>RCO</b>	Québec rdo 123.275 (FISE) 126.7 (bcst)
<b>ATIS</b>	(English) 134.6 418-871-6893; (French) 128.3 418-871-6895
<b>GND</b>	Québec 121.9 250.0
<b>TWR</b>	Québec 118.65 236.6 (E) (emerg only 418-871-7691)
<b>TML</b>	Québec 124.0 VFR 127.85 IFR 322.8
<b>PAL</b>	Montréal Ctr 135.025 270.9
<b>NAV</b>	
<b>VORTAC</b>	YQB 112.8 Ch 75 N46 42 19 W71 37 35 (221')
<b>DME</b>	YQO 113.2 Ch 79 N46 47 49 W71 23 34 (312')
<b>ILS</b>	IQB 109.5 (Rwy 06) RVR LOC reliable only within 10° either side of centreline.



## QUEBEC

## AERODROME/FACILITY DIRECTORY

## QUÉBEC / JEAN LESAGE INTL QC (Cont'd)

CYQB

## PRO

Reservation required for touch and go 24h prior ctc 800-633-1353. Above 15°C, no acft with more than 100 pax or over 85,000 lbs is auth to perform 180° turns on any rwy without perms 418-640-0707.

Tng Flts dep aprt to CYA616T as per VTPC to cross St-Augustin at 2000 ASL & maintain until St-Gilles checkpoint. Arr ctc tml leaving CYA616T & continue as per VTPC

St-Lambert (town) checkpoint enter CZ 2500 ASL.

Pilots should refer to Canadian Airport Charts (CAC) to obtain details on established hot spots, prior to operating on maneuvering areas. CAC are available for free on the NAV CANADA website.

**Paragliding:** Paragliding activities in the region of Mont-Ste-Anne refer to QUÉBEC VTPC - GLIDER OPERATIONS.

**Circuits:** Rgt hand circuit Rwy 24 (CAR 602.96).

**REDUCED VISIBILITY PROCEDURES (RVR less than 2600 to 1200 ft)**

Reduced Visibility operations - 24 hours

Reduced Visibility Operations on Rwy 06-24: these are operations when reported visibility is less than RVR 2600 feet or ½ statute mile and greater than or equal to RVR 1200 feet or ¼ statute mile, per advisory circular CI 302-001.

Low visibility operations (LVOP) (below RVR 1200') are not permitted.

## QUÉBEC / JEAN LESAGE INTL QC (Cont'd)

CYQB

## PRO (Cont'd)

## DEPARTURES &amp; ARRIVALS

"Follow-me" car

A Follow-me car will be available at all times, under any circumstances, upon a pilot's request. This service is available for one aircraft at a time based on first come, first served principles; some exceptions may apply.

During RVOP conditions, run-ups and towing will not be authorized on the maneuvering areas. Furthermore, vehicle access to the maneuver area during reduced visibility operations is restricted to essential operational functions only.

Operation Terms

20 minutes prior to a flight's departure or arrival, the pilot shall contact Nav Canada's ground controller to request a "Follow-me" car escort for taxiing on the manoeuvring area.

The pilot shall provide the following information:

- Exact position on the airfield (gate or FBO);
- Type of aircraft and airline;
- Flight departure time (if available);
- Runway used for take-off;

The "Follow-me" car will position itself 30m in front of the aircraft. Hazard lights will be activated when ready for taxiing and for the duration of the escort procedure.

Upon receiving authorization to proceed, the "Follow-me" car will follow the guide lines at no more than 30kph (16 knots) up to the desired destination.

Night Only: When reported visibility is less than RVR 1800 or 3/8 SM, a "Follow-me" car is mandatory per advisory circular AC 302-004.

DEPARTURE: Dep within CZ outside of QUÉBEC / JEAN LESAGE INTL aprt bdry, ctc Québec gnd prior tkof. If unable, call Québec twr at 418-871-7814.

**RUNWAY LEVEL OF SERVICE**

**Rwy 06 RVR 1200**

**Rwy 24 (1/4 sm)**

**Preferential rwy:** Anticipate Rwy 06/24 in crosswinds up to 25 kt at 090° instead of Rwy 11.

**NOISE:**

Unless otherwise instructed by ATC, all helicopters climbing over populated areas to have best rate of climb and avoid low flying over populated areas.

## QUEBEC

AERODROME/FACILITY DIRECTORY

## QUÉBEC / JEAN LESAGE INTL QC (Cont'd)

CYQB

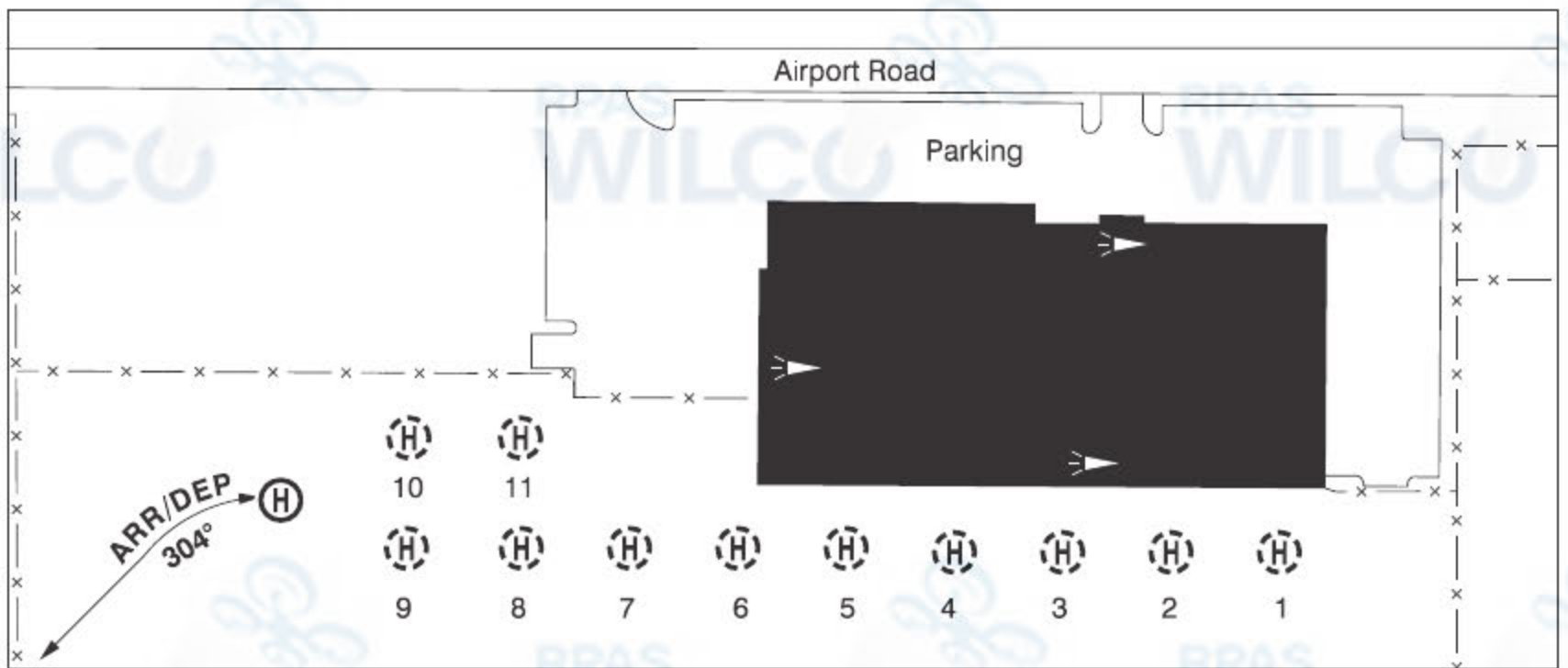
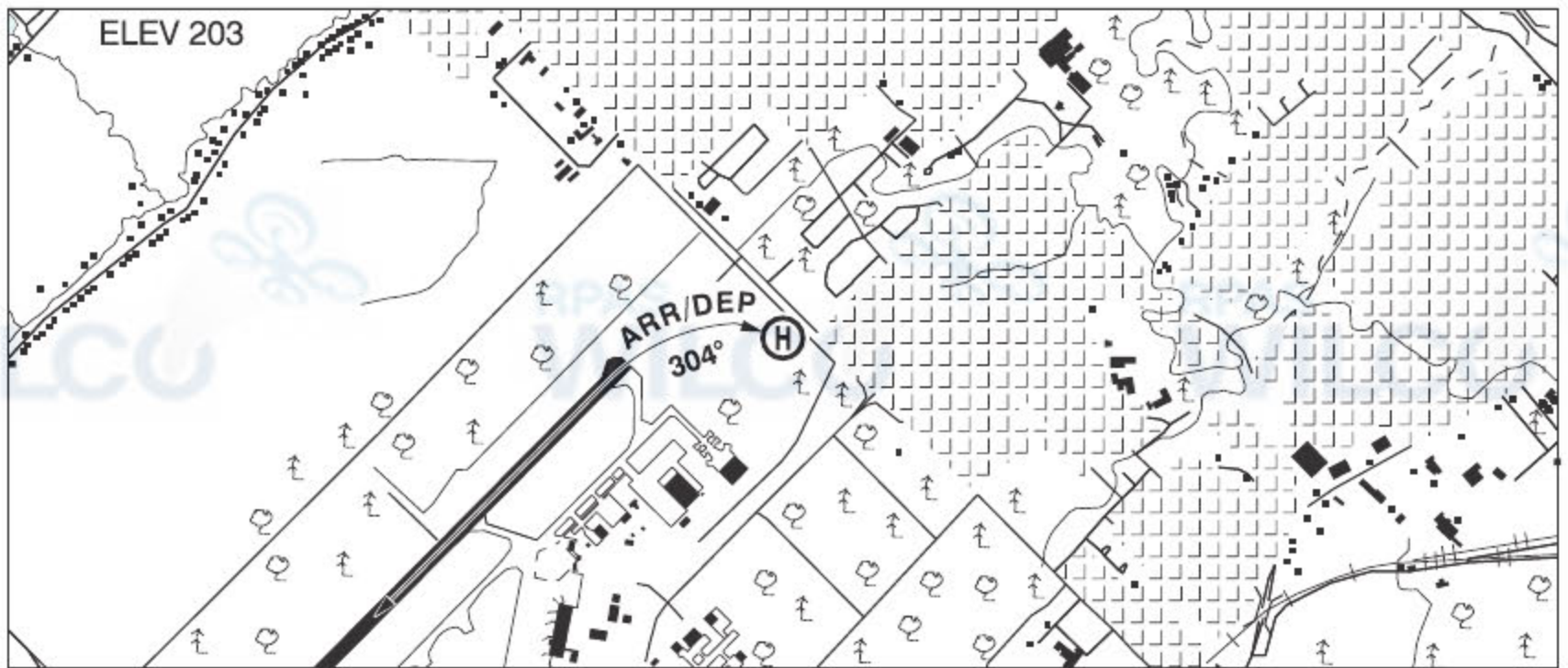
PRO (Cont'd)	<p><b>ATC:</b>  <u>IFR Clnc Acknowledgement:</u>  IFR clnc read back with Québec Twr gnd shall include acft call sign, assigned SID name and transponder code.</p> <p><b>HELI</b> All heli must ctc Ground Ctl. Avoid overflying north shore of Lac St-Augustin.  <b>ROUTES:</b> (See Québec Heli VTPC)  -Église: For arr &amp; dep via Église, proceed to a point 1.5NM E, heading 264°/084°.  -Montagne: For arr &amp; dep via Montagne, proceed to a point 1NM NW, heading 150°/330° not above 750 ASL.  -Chemin de fer: For dep via Chemin de fer, fly heading 104° to a point 1.7NM SE, then follow the railway to Robert-Bourassa highway.  For arr via Chemin de fer, follow the railway from Robert-Bourassa highway to a point 1.7NM SE and then fly heading 284°.  -Ste-Foy: Starting at highway Henry IV, follow highway Charest heading west until the intercepting Rwy 29 final at 1000 ft ASL or higher. Then proceed to the airport following the Rwy 29 final approach. Avoid flying over Rwy 29.</p> <p>Capitale Hélicoptère arr/dep proc: refer to QUÉBEC / CAPITALE HÉLICOPTÈRE QC (Heli) PRO.  Release and banner towing prohibited PPR Opr 418-640-0707</p>
CAUTION	Twin antennas aprx 2035' N of thld of Rwy 24, 140 AGL, 336 ASL, only one antenna painted & lighted.

**QUEBEC**

**AERODROME/FACILITY DIRECTORY**

**QUÉBEC / CAPITALE HÉLIOPÈRE QC (Heli)**

**CCH7**



<b>REF</b>	N46 48 03 W71 22 27 6WSW 16°W (2013) UTC-5(4) Elev 203' A5002
<b>OPR</b>	Centre d'Affaires Capital Hélicoptère Inc. 418-871-4466 Fax 418-871-7170 Cert 24hr PN
<b>PF</b>	A-1,2,7 C-3,4,5,6
<b>FLT PLN</b>	(bil)
<b>FIC</b>	Québec 866-GOMÉTÉO or 866-WXBRIEF (Toll free within Canada) or 866-541-4105 (Toll free within Canada & USA) or 418-871-8678
<b>SERVICES</b>	12-22Z± O/T call out chg may apply, clsd Dec 25 and Jan 1
<b>FUEL</b>	100LL, JA-1
<b>OIL</b>	All
<b>S</b>	1,2,3,4,6
<b>HELI DATA</b>	FATO/TLOF 64' dia ASPH Safety Area 85' dia Max heli overall length 43' 11 parking pads 51' dia ASPH
<b>RCR</b>	Opr
<b>LIGHTING</b>	RF(FH)
<b>COMM</b>	
<b>ATIS</b>	(English) 134.6 418-871-6893; (French) 128.3 418-871-6895
<b>GND</b>	Québec 121.9
<b>TWR</b>	Québec 118.65
<b>TML</b>	Québec 124.0 VFR

## QUEBEC

## AERODROME/FACILITY DIRECTORY

## QUÉBEC / CAPITALE HÉLICOPTÈRE QC (Heli) (Cont'd)

CCH7

<b>PRO</b>	Arr/dep curved flt path 304° fr heli to CYQB Thld 24, unless otherwise instructed by Québec TWR, slope 6% (H3) day/night use. All heli must ctc Québec gnd con prior to dep fr FATO and Québec TWR when ready for tkof. Activate transponder "altitude" mode when outbound only.
<b>CAUTION</b>	Unlgt P-line 670' S of FATO 247' ASL (42 AGL). Lgt twr 787' ESE of FATO 312' ASL (102 AGL).

# Canadian Aviation Regulations

## Division III — General Operating and Flight Rules

For full listing please visit : <https://laws-lois.justice.gc.ca/eng/regulations/SOR-96-433/FullText.html#s-901.27>

### Visual Line-of-sight

- **901.11 (1)** Subject to subsection (2), no pilot shall operate a remotely piloted aircraft system unless the pilot or a visual observer has the aircraft in visual line-of-sight at all times during flight.
- **(2)** A pilot may operate a remotely piloted aircraft system without the pilot or a visual observer having the aircraft in visual line-of-sight if the operation is conducted in accordance with a special flight operations certificate — RPAS issued under section 903.03.

### Procedures

- **901.23 (1)** No pilot shall operate a remotely piloted aircraft system unless the following procedures are established:
  - **(a)** normal operating procedures, including pre-flight, take-off, launch, approach, landing and recovery procedures; and
  - **(b)** emergency procedures, including with respect to
    - **(i)** a control station failure,
    - **(ii)** an equipment failure,
    - **(iii)** a failure of the remotely piloted aircraft,
    - **(iv)** a loss of the command and control link,
    - **(v)** a fly-away, and
    - **(vi)** flight termination.
- **(2)** If the manufacturer of the remotely piloted aircraft system provides instructions with respect to the topics referred to in paragraphs (1)(a) and (b), the procedures established under subsection (1) shall reflect those instructions.
- **(3)** No pilot shall conduct the take-off or launch of a remotely piloted aircraft unless the procedures referred to in subsection (1) are reviewed before the flight by, and are immediately available to, each crew member.
- **(4)** No pilot shall operate a remotely piloted aircraft system unless the operation is conducted in accordance with the procedures referred to in subsection (1).

### Site Survey

**901.27** No pilot shall operate a remotely piloted aircraft system unless, before commencing operations, they determine that the site for take-off, launch, landing or recovery is suitable for the proposed operation by conducting a site survey that takes into account the following factors:

- **(a)** the boundaries of the area of operation;
- **(b)** the type of airspace and the applicable regulatory requirements;
- **(c)** the altitudes and routes to be used on the approach to and departure from the area of operation;
- **(d)** the proximity of manned aircraft operations;
- **(e)** the proximity of aerodromes, airports and heliports;
- **(f)** the location and height of obstacles, including wires, masts, buildings, cell phone towers and wind turbines;
- **(g)** the predominant weather and environmental conditions for the area of operation; and
- **(h)** the horizontal distances from persons not involved in the operation.

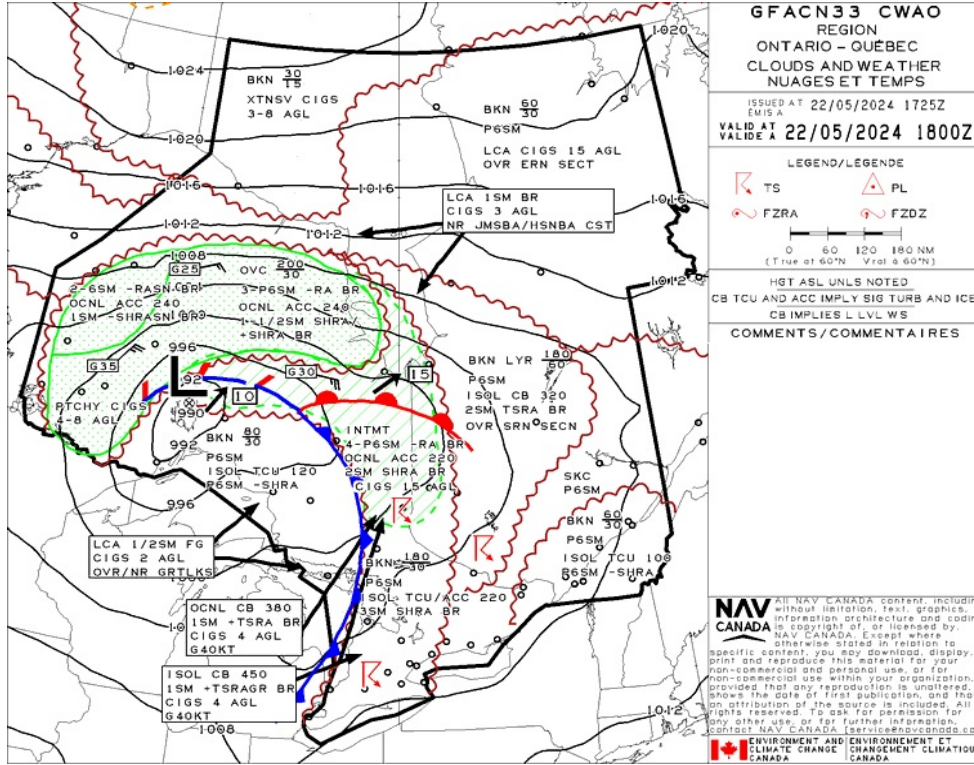
### Operations at or in the Vicinity of an Aerodrome, Airport or Heliport

- **901.47 (1)** No pilot shall operate a remotely piloted aircraft at or near an aerodrome that is listed in the *Canada Flight Supplement* or the *Water Aerodrome Supplement* in a manner that could interfere with an aircraft operating in the established traffic pattern.
- **(2)** Subject to section 901.73, no pilot shall operate a remotely piloted aircraft at a distance of less than
  - **(a)** three nautical miles from the centre of an airport; and
  - **(b)** one nautical mile from the centre of a heliport.
- **(3)** No pilot shall operate a remotely piloted aircraft at a distance of less than three nautical miles from the centre of an aerodrome operated under the authority of the Minister of National Defence unless the operation is conducted in accordance with a special flight operations certificate — RPAS issued under section 903.03.

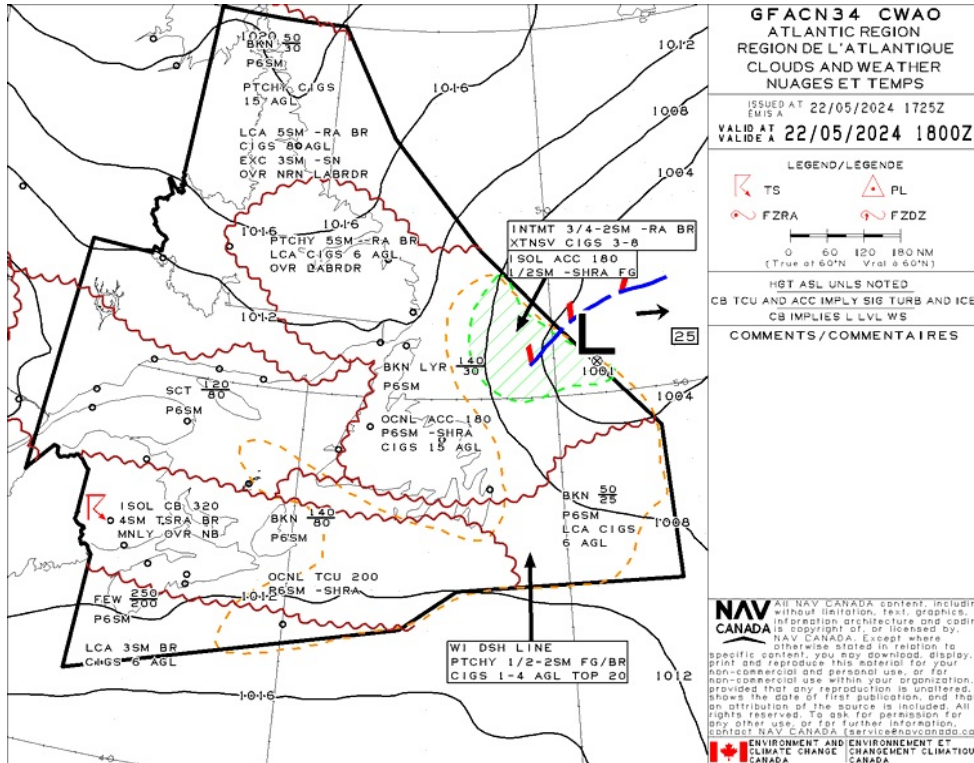
### Records

- **901.48 (1)** Every owner of a remotely piloted aircraft system shall keep the following records:
  - **(a)** a record containing the names of the pilots and other crew members who are involved in each flight and, in respect of the system, the time of each flight or series of flights; and
  - **(b)** a record containing the particulars of any mandatory action and any other maintenance action, modification or repair performed on the system, including
    - **(i)** the names of the persons who performed them,
    - **(ii)** the dates they were undertaken,
    - **(iii)** in the case of a modification, the manufacturer, model and a description of the part or equipment installed to modify the system, and
    - **(iv)** if applicable, any instructions provided to complete the work.
- **(2)** Every owner of a remotely piloted aircraft system shall ensure that the records referred to in subsection (1) are made available to the Minister on request and are retained for a period of
  - **(a)** in the case of the records referred to in paragraph (1)(a), 12 months after the day on which they are created; and
  - **(b)** in the case of the records referred to in paragraph (1)(b), 24 months after the day on which they are created.
- **(3)** Every owner of a remotely piloted aircraft system who transfers ownership of the system to another person shall, at the time of transfer, also deliver to that person all of the records referred to in paragraph (1)(b).

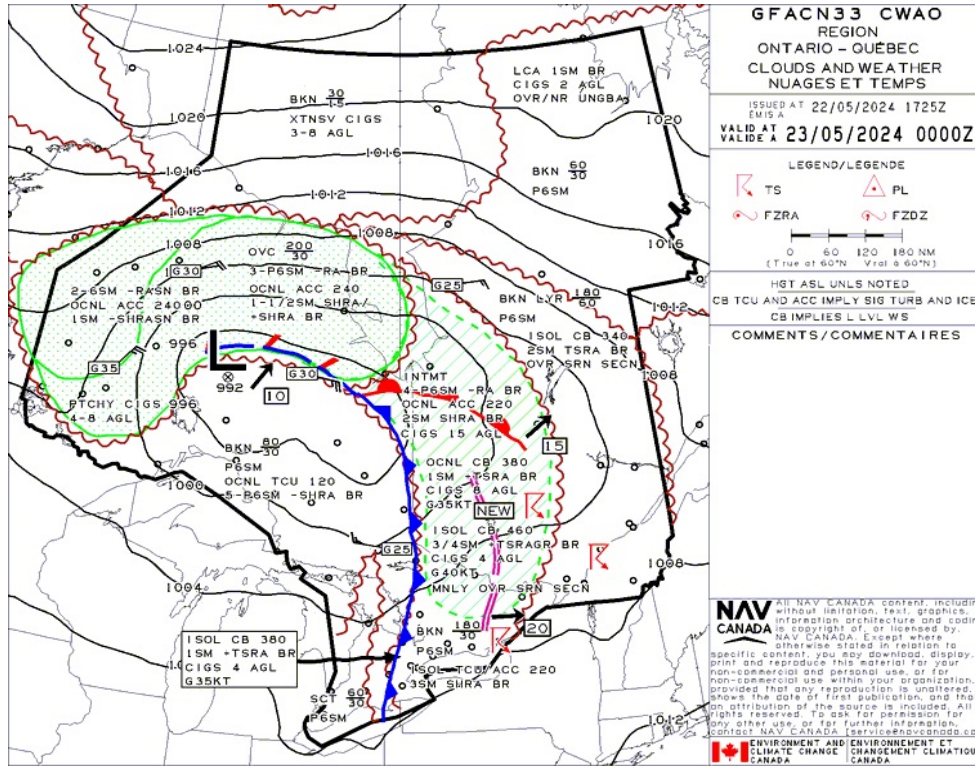
## GFA Issue time + 00 hr - CLOUDS AND WEATHER



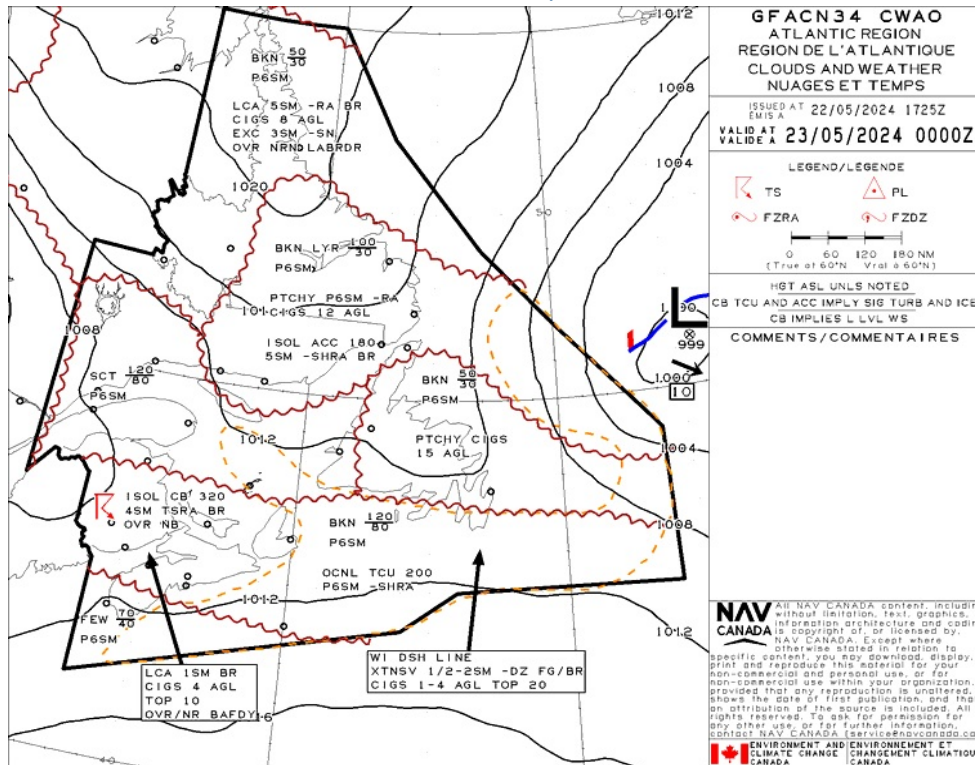
## GFA Issue time + 00 hr - TURBULENCE, ICING AND FREEZING LEVEL



## GFA Issue time + 06 hr - CLOUDS AND WEATHER

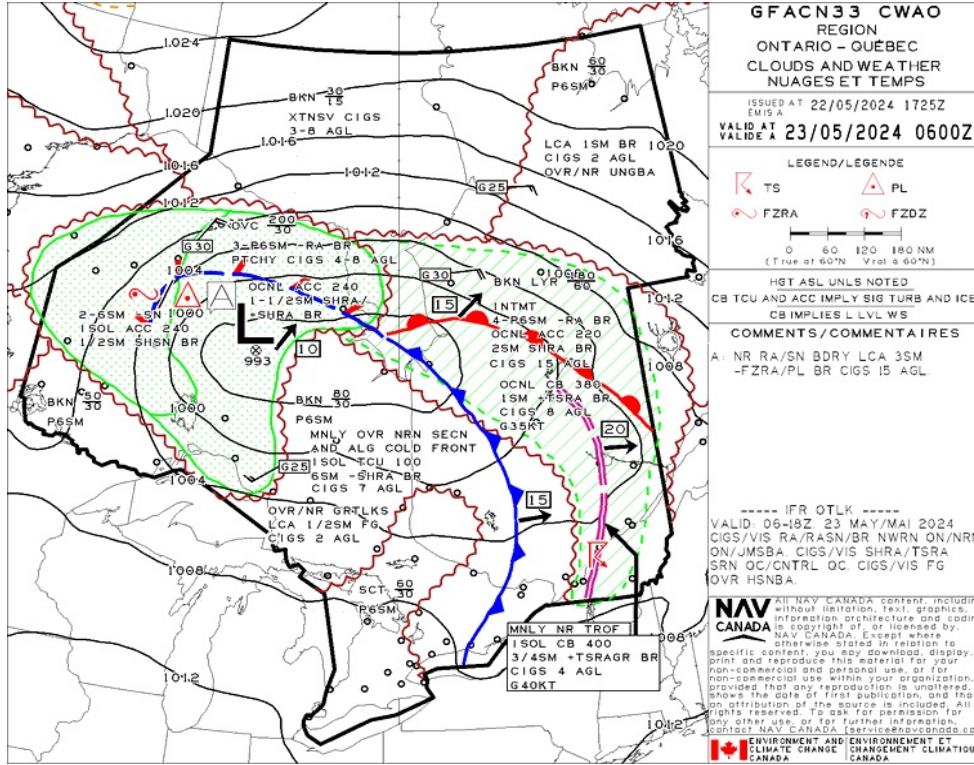


## GFA Issue time + 06 hr - TURBULENCE, ICING AND FREEZING LEVEL

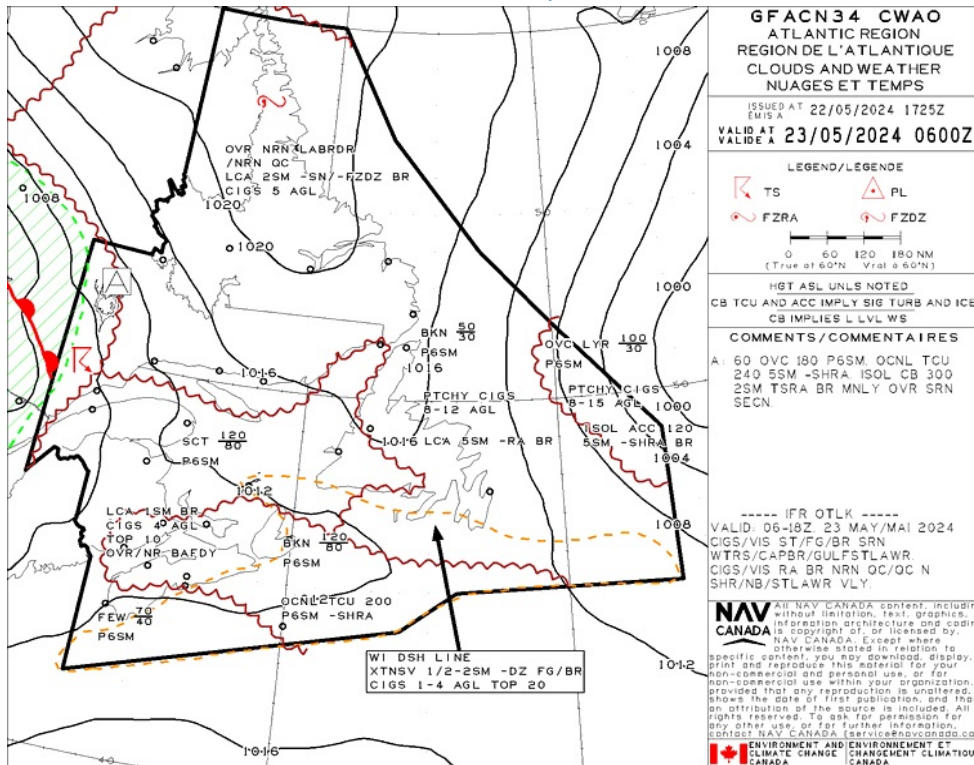




## GFA Issue time + 12 hr - CLOUDS AND WEATHER



## GFA Issue time + 12 hr - TURBULENCE, ICING AND FREEZING LEVEL





# Flight Plan & Site Survey

## ST-APOLLINAIRE (AIRPRO) - CAA4 - Reg

### NOTAM

(K1288/24 NOTAMN  
Q) CZUL/QFAXX/IV/NBO/A/000/999/4635N07134W005  
A) CXXX B) 2405031931 C) PERM  
E) CAA4 ST-APOLLINAIRE (AIRPRO)  
AMEND PUBLICATIONS: CAUTION: ADD: RPAS OPS MAX 675 ASL (400 AGL)  
APRX 3NM NNE OF A/D MAY-DEC

FR:  
CAA4 ST-APOLLINAIRE (AIRPRO)  
MODIFIEZ PUBLICATIONS: ATTENTION: AJOUTEZ: OPS SATP MAX 675 ASL  
(400 AGL) APRX 3NM NNE D'A/D MAI-DEC)

(H1971/24 NOTAMN  
Q) CZUL/QCAAS/IV/B0/AE/000/290/4746N06935W200  
A) CYRI B) 2405231145 C) 2405232359  
E) MONTREAL CENTRE PERIPHERAL STATION (PAL) 125.1MHZ  
AT RIVIERE-DU-LOUP U/S

FR:  
CENTRE DE MONTREAL STATION PERIPHERIQUE (PAL) 125.1MHZ  
A RIVIERE-DU-LOUP U/S)

(H1259/24 NOTAMR H0064/24  
Q) CZXX/QOEXX/IV/NBO/E/000/999/5243N05321W999  
A) CZUL CZQX CZQM B) 2404081701 C) 2407041700EST  
E) AIRSPACE SECURITY WARNING ISSUED BY THE DEPARTMENT OF TRANSPORT  
IN RESPONSE TO THE SECURITY SITUATION IN LEBANON. CANADIAN AIR  
OPERATORS AND OWNERS OF ACFT REGISTERED IN CANADA ARE ADVISED TO  
TAKE ALL POTENTIAL RISK INFO INTO ACCOUNT IN THEIR RISK  
ASSESSMENT AND ROUTING DECISIONS WHEN OPERATING IN LEBANESE  
AIRSPACE AND FIR BEIRUT (OLBB) DUE TO POTENTIAL RISK TO AVIATION  
FROM MIL ACT.

FR:  
AVERTISSEMENT RELATIF A LA SECURITE DE L'ESPACE AERIEN EMIS PAR  
LE MINISTERE DES TRANSPORTS EN REPONSE A LA SITUATION DE SECURITE  
EN LIBAN. ON RECOMMANDE AUX EXPLOITANTS AERIENS CANADIENS ET  
PROPRIETAIRES D'AVIONS IMMATRICULES AU CANADA DE PRENDRE EN  
COMPTE TOUTES LES INFO SUR LES RISQUES POTENTIELS DANS LEUR  
EVALUATION DES RISQUES ET LEURS DECISIONS D'ITINERAIRE LORSQU'ILS  
OPERENT DANS L'ESPACE AERIEN LIBANAIS ET LA REGION D'INFORMATION  
DE VOL DE BEYROUTH (OLBB), EN RAISON DU RISQUE POTENTIEL POUR  
L'AVIATION LIE A L'ACT MIL)

(H1968/24 NOTAMR H1967/24  
Q) CZUL/QACXX/IV/NBO/AE/000/035/4647N07124W016  
A) CYQB B) 2405221945 C) 2405222330  
E) DUE TO REDUCED SYSTEM CAPACITY, TOUCH AND GO AND IFR AND VFR  
TRAINING FLT NOT AUTH IN THE QUEBEC/JEAN LESAGE INTL CTL ZONE.  
INFO CTC 514-633-3365

FR:  
EN RAISON DE LA CAPACITE REDUITE DU SYSTEME, POSER DECOLLER ET  
FLT D'ENTRAINEMENT IFR ET VFR NON AUTH DANS LA ZONE DE CTL DE  
QUEBEC/JEAN LESAGE INTL. INFO CTC 514-633-3365)

(H4360/23 NOTAMN  
Q) CZUL/QAFTT/IV/B0/E/000/999/5440N06941W999  
A) CZUL B) 2312201537 C) 2412191600EST  
E) TRIGGER NOTAM - AIP SUPPLEMENT 76/23 IN EFFECT - AUTOLAND  
PROCEDURES NOT RECOMMENDED IN RUNWAYS NOT COVERED BY ISED'S  
DESIGNATED 5G EXCLUSION AND PROTECTION ZONES

FR:  
NOTAM DECLENCHEUR - SUPPLEMENT D'AIP 76/23 EN VIGUEUR -  
PROCEDURES D'ATTERRISSAGE AUTOMATIQUE NON RECOMMANDEES SUR LES  
PISTES QUI NE FIGURENT PAS DANS UNE ZONE DESIGNEE D'EXCLUSION ET  
DE PROTECTION 5G DE L'ISDE)

(H4366/23 NOTAMN  
Q) CZXX/QADTT/IV/B0/E/000/999/5243N05321W999  
A) CZUL CZQM CZQX B) 2312202144 C) 2412191600EST  
E) TRIGGER NOTAM - AIP SUPPLEMENT 26/18 IN EFFECT. ADJUSTMENT TO THE  
CANADA AIR DEFENCE IDENTIFICATION ZONE (ADIZ).

FR:  
NOTAM DECLENCHEUR - SUPPLEMENT D'AIP 26/18 EN VIGUEUR.  
MODIFICATION DE LA ZONE D'IDENTIFICATION DE DEFENSE AERIENNE DU  
CANADA)

(H1804/24 NOTAMN  
Q) CZUL/QARCH/IV/B0/E/000/999/5440N06941W999  
A) CZUL B) 2505160901 C) PERM  
E) AMEND PUBLICATIONS: AMEND MANDATORY IFR ROUTES:  
DELETE: CYOW H AND L DEP TO KBOS RNAV KODEX EPMOK SSENA BUGSY  
OOSH ARR  
ADD: CYOW H AND L DEP TO KBOS RNAV KODEX EPMOK SSENA BUGSY ENE  
OOSH ARR

FR:  
MODIFIEZ PUBLICATIONS: SYSTEME DE ROUTES IFR OBLIGATOIRES:  
RETIRER: CYOW H ET L DEP VERS KBOS RNAV KODEX EPMOK SSENA BUGSY  
OOSH ARR

AJOUTEZ: CYOW H ET L DEP VERS KBOS RNAV KODEX EPMOK SSENA BUGSY  
ENE 00SHN ARR)

(H1097/24 NOTAMN

Q) CZUL/QARCH/IV/BO/E/000/999/5440N06941W999  
A) CZUL B) 2403271922 C) PERM  
E) AMEND PUBLICATIONS: AMEND MANDATORY IFR ROUTES:  
DELETE: E-BOUND L OLABA RNAV OLABA T791 ALONI DAVDA SSENA TALNO  
T721 TOXAL  
ADD: E-BOUND L OLABA RNAV OLABA T739 EPTUL T721 TOXAL

FR:

MODIFIEZ PUBLICATIONS: SYSTEME DE ROUTES IFR OBLIGATOIRES:  
RETIRER: DIRECTION E L OLABA RNAV OLABA T791 ALONI DAVDA SSENA  
TALNO T721 TOXAL  
AJOUTEZ: DIRECTION E L OLABA RNAV OLABA T739 EPTUL T721 TOXAL)

(H1939/24 NOTAMR H1928/24

Q) CZUL/QNNAS/IV/BO/AE/000/999/4642N07138W025  
A) CYQB B) 2405201517 C) 2406182359  
E) QUEBEC TACAN YQB 112.8MHZ/CH75X AZM U/S, DME AVBL

FR:

QUEBEC TACAN YQB 112.8MHZ/CH75X AZM U/S, DME AVBL)

(H1974/24 NOTAMN

Q) CZUL/QXXXX/IV/NBO/E/000/999/4638N07245W250  
A) CZUL B) 2405221700 C) 2405230300  
E) DUE TO REDUCED SYSTEM CAPACITY, LIMITED IFR TRAINING SLOTS AVBL  
AND VFR FLT CAN ANTICIPATE RESTRICTIONS AND/OR DLA UP TO 45MIN IN  
AIRSPACE SOUTH OF A LINE MIVOK-OTONA-IKMOL-ANATI EXC IN OTTAWA,  
MONTREAL AND QUEBEC TERMINAL AREAS. IFR TRAINING SLOT TIMES CTC  
514-633-3211

FR:

EN RAISON DE LA CAPACITE REDUITE DU SYSTEME, CRENEAUX  
D'ENTRAINEMENT IFR LIMITES ET FLT VFR PEUVENT ANTICIPER DES  
RESTRICTIONS ET/OU DLA JUSQU'A 45MIN DANS L'ESPACE AERIEN AU SUD  
D'UNE LIGNE MIVOK-OTONA-IKMOL-ANATI, EXC DANS LES ZONES TERMINAL  
D'OTTAWA, MONTREAL ET QUEBEC. CRENEAUX D'ENTRAINEMENT IFR CTC  
514-633-3211)

(H1572/24 NOTAMR H1549/24

Q) CZUL/QATLT/IV/NBO/AE/000/125/4647N07124W026  
A) CYQB B) 2404301415 C) 2407282100EST  
E) DUE TO REDUCED SYSTEM CAPACITY, LIMITED IFR TRAINING SLOTS AND  
VFR FLT CAN ANTICIPATE RESTRICTIONS AND/OR DLA UP TO 45MIN IN THE  
QUEBEC CLASS C TERMINAL AIRSPACE. ALL IFR TRAINING FLT AND VFR  
PHOTO SURVEY FLT PPR 1-800-633-1353.  
INFO CTC 514-633-3365.

FR:

EN RAISON DE LA CAPACITE REDUITE DU SYSTEME, CRENEAUX  
D'ENTRAINEMENT IFR LIMITES ET FLT VFR PEUVENT ANTICIPER  
RESTRICTIONS ET/OU DLA JUSQU'A 45MIN DANS L'ESPACE AERIEN  
TERMINAL CLASSE C DE QUEBEC. TOUS FLT D'ENTRAINEMENT IFR ET FLT  
DE LEVES PHOTOGRAPHIQUES VFR PPR 1-800-633-1353.  
INFO CTC 514-633-3365.)

(H1897/24 NOTAMN

Q) CZUL/QWYTT/IV/BO/W/000/030/5440N06941W999  
A) CZUL B) 2405260000 C) 2412191600EST  
E) TRIGGER NOTAM - AIP SUPPLEMENT 35/24 WEF 26 MAY 2024 FLIGHT  
OPERATIONS: FOREST SPRAYING ABITIBI, LAC SAINT-JEAN, NORTH SHORE  
OF THE ST. LAWRENCE, BAS-SAINT-LAURENT REGION, AND GASPEISIE

FR:

NOTAM DECLENCHEUR - SUPPLEMENT D'AIP 35/24 WEF 26 MAI 2024.  
OPERATIONS AERIENNES: PULVERISATION FORESTIERE EN ABITIBI LAC  
SAINT-JEAN, RIVE NORD DU SAINT-LAURENT, BAS-SAINT-LAURENT ET  
GASPESIE  
F) SFC G) 3000FT AMSL)

NEUVILLE - CNV9 - Reg

## NOTAM

(H1971/24 NOTAMN

Q) CZUL/QCAAS/IV/B0/AE/000/290/4746N06935W200  
A) CYRI B) 2405231145 C) 2405232359  
E) MONTREAL CENTRE PERIPHERAL STATION (PAL) 125.1MHZ  
AT RIVIERE-DU-LOUP U/S

FR:

CENTRE DE MONTREAL STATION PERIPHERIQUE (PAL) 125.1MHZ  
A RIVIERE-DU-LOUP U/S)

(H1259/24 NOTAMR H0064/24

Q) CZXX/QOEXX/IV/NB0/E/000/999/5243N05321W999  
A) CZUL CZQX CZQM B) 2404081701 C) 2407041700EST  
E) AIRSPACE SECURITY WARNING ISSUED BY THE DEPARTMENT OF TRANSPORT  
IN RESPONSE TO THE SECURITY SITUATION IN LEBANON. CANADIAN AIR  
OPERATORS AND OWNERS OF ACFT REGISTERED IN CANADA ARE ADVISED TO  
TAKE ALL POTENTIAL RISK INFO INTO ACCOUNT IN THEIR RISK  
ASSESSMENT AND ROUTING DECISIONS WHEN OPERATING IN LEBANESE  
AIRSPACE AND FIR BEIRUT (OLBB) DUE TO POTENTIAL RISK TO AVIATION  
FROM MIL ACT.

FR:

AVERTISSEMENT RELATIF A LA SECURITE DE L'ESPACE AERIEN EMIS PAR  
LE MINISTERE DES TRANSPORTS EN REPONSE A LA SITUATION DE SECURITE  
EN LIBAN. ON RECOMMANDE AUX EXPLOITANTS AERIENS CANADIENS ET  
PROPRIETAIRES D'AVIONS IMMATRICULES AU CANADA DE PRENDRE EN  
COMPTE TOUTES LES INFO SUR LES RISQUES POTENTIELS DANS LEUR  
EVALUATION DES RISQUES ET LEURS DECISIONS D'ITINERAIRE LORSQU'ILS  
OPERENT DANS L'ESPACE AERIEN LIBANAIS ET LA REGION D'INFORMATION  
DE VOL DE BEYROUTH (OLBB), EN RAISON DU RISQUE POTENTIEL POUR  
L'AVIATION LIE A L'ACT MIL)

(H1968/24 NOTAMR H1967/24

Q) CZUL/QACXX/IV/NB0/AE/000/035/4647N07124W016  
A) CYQB B) 2405221945 C) 2405222330  
E) DUE TO REDUCED SYSTEM CAPACITY, TOUCH AND GO AND IFR AND VFR  
TRAINING FLT NOT AUTH IN THE QUEBEC/JEAN LESAGE INTL CTL ZONE.  
INFO CTC 514-633-3365

FR:

EN RAISON DE LA CAPACITE REDUITE DU SYSTEME, POSER DECOLLER ET  
FLT D'ENTRAINEMENT IFR ET VFR NON AUTH DANS LA ZONE DE CTL DE  
QUEBEC/JEAN LESAGE INTL. INFO CTC 514-633-3365)

(H4360/23 NOTAMN

Q) CZUL/QAFTT/IV/B0/E/000/999/5440N06941W999  
A) CZUL B) 2312201537 C) 2412191600EST  
E) TRIGGER NOTAM - AIP SUPPLEMENT 76/23 IN EFFECT - AUTOLAND  
PROCEDURES NOT RECOMMENDED IN RUNWAYS NOT COVERED BY ISED'S  
DESIGNATED 5G EXCLUSION AND PROTECTION ZONES

FR:

NOTAM DECLENCHEUR - SUPPLEMENT D'AIP 76/23 EN VIGUEUR -  
PROCEDURES D'ATTERRISSAGE AUTOMATIQUE NON RECOMMANDEES SUR LES  
PISTES QUI NE FIGURENT PAS DANS UNE ZONE DESIGNEE D'EXCLUSION ET  
DE PROTECTION 5G DE L'ISDE)

(H4366/23 NOTAMN

Q) CZXX/QADTT/IV/B0/E/000/999/5243N05321W999  
A) CZUL CZQM CZQX B) 2312202144 C) 2412191600EST  
E) TRIGGER NOTAM - AIP SUPPLEMENT 26/18 IN EFFECT. ADJUSTMENT TO THE  
CANADA AIR DEFENCE IDENTIFICATION ZONE (ADIZ).

FR:

NOTAM DECLENCHEUR - SUPPLEMENT D'AIP 26/18 EN VIGUEUR.  
MODIFICATION DE LA ZONE D'IDENTIFICATION DE DEFENSE AERIENNE DU  
CANADA)

(H1804/24 NOTAMN

Q) CZUL/QARCH/IV/B0/E/000/999/5440N06941W999  
A) CZUL B) 2505160901 C) PERM  
E) AMEND PUBLICATIONS: AMEND MANDATORY IFR ROUTES:  
DELETE: CYOW H AND L DEP TO KBOS RNAV KODEX EPMOK SSENA BUGSY  
OOSHN ARR  
ADD: CYOW H AND L DEP TO KBOS RNAV KODEX EPMOK SSENA BUGSY ENE  
OOSHN ARR

FR:

MODIFIEZ PUBLICATIONS: SYSTEME DE ROUTES IFR OBLIGATOIRES:  
RETIRER: CYOW H ET L DEP VERS KBOS RNAV KODEX EPMOK SSENA BUGSY  
OOSHN ARR  
AJOUTEZ: CYOW H ET L DEP VERS KBOS RNAV KODEX EPMOK SSENA BUGSY  
ENE OOSHN ARR)

(H1097/24 NOTAMN

Q) CZUL/QARCH/IV/B0/E/000/999/5440N06941W999  
A) CZUL B) 2403271922 C) PERM  
E) AMEND PUBLICATIONS: AMEND MANDATORY IFR ROUTES:  
DELETE: E-BOUND L OLABA RNAV OLABA T791 ALONI DAVDA SSENA TALNO  
T721 TOXAL  
ADD: E-BOUND L OLABA RNAV OLABA T739 EPTUL T721 TOXAL

FR:

MODIFIEZ PUBLICATIONS: SYSTEME DE ROUTES IFR OBLIGATOIRES:  
RETIRER: DIRECTION E L OLABA RNAV OLABA T791 ALONI DAVDA SSENA  
TALNO T721 TOXAL  
AJOUTEZ: DIRECTION E L OLABA RNAV OLABA T739 EPTUL T721 TOXAL)

(H1939/24 NOTAMR H1928/24  
Q) CZUL/QNNAS/IV/BO/AE/000/999/4642N07138W025  
A) CYQB B) 2405201517 C) 2406182359  
E) QUEBEC TACAN YQB 112.8MHZ/CH75X AZM U/S, DME AVBL

FR:  
QUEBEC TACAN YQB 112.8MHZ/CH75X AZM U/S, DME AVBL)

(H1974/24 NOTAMN  
Q) CZUL/QXXX/IV/NBO/E/000/999/4638N07245W250  
A) CZUL B) 2405221700 C) 2405230300  
E) DUE TO REDUCED SYSTEM CAPACITY, LIMITED IFR TRAINING SLOTS AVBL  
AND VFR FLT CAN ANTICIPATE RESTRICTIONS AND/OR DLA UP TO 45MIN IN  
AIRSPACE SOUTH OF A LINE MIVOK-OTONA-IKMOL-ANATI EXC IN OTTAWA,  
MONTREAL AND QUEBEC TERMINAL AREAS. IFR TRAINING SLOT TIMES CTC  
514-633-3211

FR:  
EN RAISON DE LA CAPACITE REDUITE DU SYSTEME, CRENEAUX  
D'ENTRAINEMENT IFR LIMITES ET FLT VFR PEUVENT ANTICIPER DES  
RESTRICTIONS ET/OU DLA JUSQU'A 45MIN DANS L'ESPACE AERIEN AU SUD  
D'UNE LIGNE MIVOK-OTONA-IKMOL-ANATI, EXC DANS LES ZONES TERMINAL  
D'OTTAWA, MONTREAL ET QUEBEC. CRENEAUX D'ENTRAINEMENT IFR CTC  
514-633-3211)

(H1572/24 NOTAMR H1549/24  
Q) CZUL/QATLT/IV/NBO/AE/000/125/4647N07124W026  
A) CYQB B) 2404301415 C) 2407282100EST  
E) DUE TO REDUCED SYSTEM CAPACITY, LIMITED IFR TRAINING SLOTS AND  
VFR FLT CAN ANTICIPATE RESTRICTIONS AND/OR DLA UP TO 45MIN IN THE  
QUEBEC CLASS C TERMINAL AIRSPACE. ALL IFR TRAINING FLT AND VFR  
PHOTO SURVEY FLT PPR 1-800-633-1353.  
INFO CTC 514-633-3365.

FR:  
EN RAISON DE LA CAPACITE REDUITE DU SYSTEME, CRENEAUX  
D'ENTRAINEMENT IFR LIMITES ET FLT VFR PEUVENT ANTICIPER  
RESTRICTIONS ET/OU DLA JUSQU'A 45MIN DANS L'ESPACE AERIEN  
TERMINAL CLASSE C DE QUEBEC. TOUS FLT D'ENTRAINEMENT IFR ET FLT  
DE LEVES PHOTOGRAPHIQUES VFR PPR 1-800-633-1353.  
INFO CTC 514-633-3365.)

(H1897/24 NOTAMN  
Q) CZUL/QWYTT/IV/BO/W/000/030/5440N06941W999  
A) CZUL B) 2405260000 C) 2412191600EST  
E) TRIGGER NOTAM - AIP SUPPLEMENT 35/24 WEF 26 MAY 2024 FLIGHT  
OPERATIONS: FOREST SPRAYING ABITIBI, LAC SAINT-JEAN, NORTH SHORE  
OF THE ST. LAWRENCE, BAS-SAINT-LAURENT REGION, AND GASPEISIE

FR:  
NOTAM DECLENCHEUR - SUPPLEMENT D'AIP 35/24 WEF 26 MAI 2024.  
OPERATIONS AERIENNES: PULVERISATION FORESTIERE EN ABITIBI LAC  
SAINT-JEAN, RIVE NORD DU SAINT-LAURENT, BAS-SAINT-LAURENT ET  
GASPEISIE  
F) SFC G) 3000FT AMSL)

## LAC ST-AUGUSTIN - CSN8 - Cert

### NOTAM

(H4360/23 NOTAMN

Q) CZUL/QAFTT/IV/B0/E/000/999/5440N06941W999

A) CZUL B) 2312201537 C) 2412191600EST

E) TRIGGER NOTAM - AIP SUPPLEMENT 76/23 IN EFFECT - AUTOLAND PROCEDURES NOT RECOMMENDED IN RUNWAYS NOT COVERED BY ISED'S DESIGNATED 5G EXCLUSION AND PROTECTION ZONES

FR:

NOTAM DECLENCHEUR - SUPPLEMENT D'AIP 76/23 EN VIGUEUR - PROCEDURES D'ATTERRISSAGE AUTOMATIQUE NON RECOMMANDEES SUR LES PISTES QUI NE FIGURENT PAS DANS UNE ZONE DESIGNEE D'EXCLUSION ET DE PROTECTION 5G DE L'ISDE)

(E2168/24 NOTAMN

Q) CZUL/QMRLT/IV/NB0/A/000/999/4647N07124W005

A) CYQB B) 2404151200 C) 2406142130

E) RWY 06/24 NOT AVBL FOR ACFT TYPE A-340-600, A-350-900-1000, B777-300 AND B787-10

FR:

RWY 06/24 NON AVBL POUR TYPE ACFT A-340-600, A-350-900-1000, B777-300 AND B787-10)

(H4366/23 NOTAMN

Q) CZXX/QADTT/IV/B0/E/000/999/5243N05321W999

A) CZUL CZQM CZQX B) 2312202144 C) 2412191600EST

E) TRIGGER NOTAM - AIP SUPPLEMENT 26/18 IN EFFECT. ADJUSTMENT TO THE CANADA AIR DEFENCE IDENTIFICATION ZONE (ADIZ).

FR:

NOTAM DECLENCHEUR - SUPPLEMENT D'AIP 26/18 EN VIGUEUR. MODIFICATION DE LA ZONE D'IDENTIFICATION DE DEFENSE AERIENNE DU CANADA)

(H1804/24 NOTAMN

Q) CZUL/QARCH/IV/B0/E/000/999/5440N06941W999

A) CZUL B) 2505160901 C) PERM

E) AMEND PUBLICATIONS: AMEND MANDATORY IFR ROUTES:

DELETE: CYOW H AND L DEP TO KBOS RNAV KODEX EPMOK SSENA BUGSY OOSHN ARR

ADD: CYOW H AND L DEP TO KBOS RNAV KODEX EPMOK SSENA BUGSY ENE OOSHN ARR

FR:

MODIFIEZ PUBLICATIONS: SYSTEME DE ROUTES IFR OBLIGATOIRES: RETIRER: CYOW H ET L DEP VERS KBOS RNAV KODEX EPMOK SSENA BUGSY OOSHN ARR AJOUTEZ: CYOW H ET L DEP VERS KBOS RNAV KODEX EPMOK SSENA BUGSY ENE OOSHN ARR)

(H1939/24 NOTAMR H1928/24

Q) CZUL/QNNAS/IV/B0/AE/000/999/4642N07138W025

A) CYQB B) 2405201517 C) 2406182359

E) QUEBEC TACAN YQB 112.8MHZ/CH75X AZM U/S, DME AVBL

FR:

QUEBEC TACAN YQB 112.8MHZ/CH75X AZM U/S, DME AVBL)

(E2171/24 NOTAMR E2167/24

Q) CZUL/QMXLC/IV/M/A/000/999/4647N07124W005

A) CYQB B) 2404150930 C) 2406142130

E) TWY G AND TWY H CLSD.

FR:

TWY G ET TWY H CLSD.)

(H1572/24 NOTAMR H1549/24

Q) CZUL/QATLT/IV/NB0/AE/000/125/4647N07124W026

A) CYQB B) 2404301415 C) 2407282100EST

E) DUE TO REDUCED SYSTEM CAPACITY, LIMITED IFR TRAINING SLOTS AND VFR FLT CAN ANTICIPATE RESTRICTIONS AND/OR DLA UP TO 45MIN IN THE QUEBEC CLASS C TERMINAL AIRSPACE. ALL IFR TRAINING FLT AND VFR PHOTO SURVEY FLT PPR 1-800-633-1353. INFO CTC 514-633-3365.

FR:

EN RAISON DE LA CAPACITE REDUITE DU SYSTEME, CRENEAUX D'ENTRAINEMENT IFR LIMITES ET FLT VFR PEUVENT ANTICIPER RESTRICTIONS ET/OU DLA JUSQU'A 45MIN DANS L'ESPACE AERIEN TERMINAL CLASSE C DE QUEBEC. TOUS FLT D'ENTRAINEMENT IFR ET FLT DE LEVES PHOTOGRAPHIQUES VFR PPR 1-800-633-1353. INFO CTC 514-633-3365.)

(H1897/24 NOTAMN

Q) CZUL/QWYTT/IV/B0/W/000/030/5440N06941W999

A) CZUL B) 2405260000 C) 2412191600EST

E) TRIGGER NOTAM - AIP SUPPLEMENT 35/24 WEF 26 MAY 2024 FLIGHT OPERATIONS: FOREST SPRAYING ABITIBI, LAC SAINT-JEAN, NORTH SHORE OF THE ST. LAWRENCE, BAS-SAINT-LAURENT REGION, AND GASPESIE

FR:

NOTAM DECLENCHEUR - SUPPLEMENT D'AIP 35/24 WEF 26 MAI 2024. OPERATIONS AERIENNES: PULVERISATION FORESTIERE EN ABITIBI LAC

SAINT-JEAN, RIVE NORD DU SAINT-LAURENT, BAS-SAINT-LAURENT ET  
GASPESIE  
F) SFC G) 3000FT AMSL)

(E2932/24 NOTAMN  
Q) CZUL/QLSAS/I/BO/A/000/999/4647N07124W005  
A) CYQB B) 2405241330 C) 2405241530  
E) RWY GUARD LGT RWY 06/24 AND 11/29 U/S

FR:  
LGT DE PROTECTION DE RWY 06/24 ET 11/29 U/S)

(E2933/24 NOTAMN  
Q) CZUL/QLEAS/IV/BO/A/000/999/4647N07124W005  
A) CYQB B) 2405241330 C) 2405241530  
E) REDL 11/29 U/S

FR:  
REDL 11/29 U/S)

(H1259/24 NOTAMR H0064/24  
Q) CZXX/QOEXX/IV/NBO/E/000/999/5243N05321W999  
A) CZUL CZQX CZQM B) 2404081701 C) 2407041700EST  
E) AIRSPACE SECURITY WARNING ISSUED BY THE DEPARTMENT OF TRANSPORT  
IN RESPONSE TO THE SECURITY SITUATION IN LEBANON. CANADIAN AIR  
OPERATORS AND OWNERS OF ACFT REGISTERED IN CANADA ARE ADVISED TO  
TAKE ALL POTENTIAL RISK INFO INTO ACCOUNT IN THEIR RISK  
ASSESSMENT AND ROUTING DECISIONS WHEN OPERATING IN LEBANESE  
AIRSPACE AND FIR BEIRUT (OLBB) DUE TO POTENTIAL RISK TO AVIATION  
FROM MIL ACT.

FR:  
AVERTISSEMENT RELATIF A LA SECURITE DE L'ESPACE AERIEN EMIS PAR  
LE MINISTERE DES TRANSPORTS EN REPONSE A LA SITUATION DE SECURITE  
EN LIBAN. ON RECOMMANDE AUX EXPLOITANTS AERIENS CANADIENS ET  
PROPRIETAIRES D'AVIONS IMMATRICULES AU CANADA DE PRENDRE EN  
COMPTE TOUTES LES INFO SUR LES RISQUES POTENTIELS DANS LEUR  
EVALUATION DES RISQUES ET LEURS DECISIONS D'ITINERAIRE LORSQU'ILS  
OPERENT DANS L'ESPACE AERIEN LIBANAIS ET LA REGION D'INFORMATION  
DE VOL DE BEYROUTH (OLBB), EN RAISON DU RISQUE POTENTIEL POUR  
L'AVIATION LIE A L'ACT MIL)

(H1968/24 NOTAMR H1967/24  
Q) CZUL/QACXX/IV/NBO/AE/000/035/4647N07124W016  
A) CYQB B) 2405221945 C) 2405222330  
E) DUE TO REDUCED SYSTEM CAPACITY, TOUCH AND GO AND IFR AND VFR  
TRAINING FLT NOT AUTH IN THE QUEBEC/JEAN LESAGE INTL CTL ZONE.  
INFO CTC 514-633-3365

FR:  
EN RAISON DE LA CAPACITE REDUITE DU SYSTEME, POSER DECOLLER ET  
FLT D'ENTRAINEMENT IFR ET VFR NON AUTH DANS LA ZONE DE CTL DE  
QUEBEC/JEAN LESAGE INTL. INFO CTC 514-633-3365)

(E2861/24 NOTAMN  
Q) CZUL/QMDCH/IV/NBO/A/000/999/4647N07124W005  
A) CYQB B) 2405211300 C) 2406142045  
D) DAILY 1300-2045  
E) FIRST 2500FT RWY 06 CLSD DUE CONST  
THR 06 IS DISPLACED BY 2500FT  
DECLARED DIST WITH RWY 06/24 LENGTH REDUCED:  
RWY 06 TORA 6500 TODA 7484 ASDA 6500 LDA 6500  
RWY 24 TORA 6500 TODA 6500 ASDA 6500 LDA 6500

FR:  
PREMIERS 2500FT RWY 06 CLSD CAUSE CONST  
THR 06 EST DECALE DE 2500FT.  
DIST DECLAREES AVEC LONGUEUR REDUITE RWY 06/24:  
RWY 06 TORA 6500 TODA 7484 ASDA 6500 LDA 6500  
RWY 24 TORA 6500 TODA 6500 ASDA 6500 LDA 6500)

(E2528/24 NOTAMN  
Q) CZUL/QIGAS/I/NBO/A/000/999/4647N07124W005  
A) CYQB B) 2405061205 C) 2406212130  
E) ILS GP RWY 06 U/S

FR:  
ILS GP RWY 06 U/S)

(H1097/24 NOTAMN  
Q) CZUL/QARCH/IV/BO/E/000/999/5440N06941W999  
A) CZUL B) 2403271922 C) PERM  
E) AMEND PUBLICATIONS: AMEND MANDATORY IFR ROUTES:  
DELETE: E-BOUND L OLABA RNAV OLABA T791 ALONI DAVDA SSENA TALNO  
T721 TOXAL  
ADD: E-BOUND L OLABA RNAV OLABA T739 EPTUL T721 TOXAL

FR:  
MODIFIEZ PUBLICATIONS: SYSTEME DE ROUTES IFR OBLIGATOIRES:  
RETIRER: DIRECTION E L OLABA RNAV OLABA T791 ALONI DAVDA SSENA  
TALNO T721 TOXAL  
AJOUTEZ: DIRECTION E L OLABA RNAV OLABA T739 EPTUL T721 TOXAL)

(E2860/24 NOTAMN  
Q) CZUL/QMRLC/IV/NBO/A/000/999/4647N07124W005  
A) CYQB B) 2405211200 C) 2406142130  
D) DAILY 1200-1300 2045-2130  
E) RWY 06/24 CLSD AVBL AS TWY BTN RWY 11/29 AND TWY E.

FR:  
RWY 06/24 CLSD AVBL COMME TWY BTN RWY 11/29 ET TWY E.)

(E2859/24 NOTAMN  
Q) CZUL/QMRAP/IV/NBO/A/000/999/4647N07124W005  
A) CYQB B) 2405212015 C) 2406142045  
D) DAILY 2015-2045  
E) RWY 06/24 AVBL 30MIN PPR CTC 418-640-0707

FR:  
RWY 06/24 AVBL 30MIN PPR CTC 418-640-0707)

(E2934/24 NOTAMN  
Q) CZUL/QLYAS/IV/M/A/000/999/4647N07124W005  
A) CYQB B) 2405241330 C) 2405241530  
E) TWY EDGE LGT A, B, D, E, AND RAMP 1 U/S

FR:  
TWY EDGE LGT A, B, D, E, ET RAMPE 1 U/S)

(H1974/24 NOTAMN  
Q) CZUL/QXXX/IV/NBO/E/000/999/4638N07245W250  
A) CZUL B) 2405221700 C) 2405230300  
E) DUE TO REDUCED SYSTEM CAPACITY, LIMITED IFR TRAINING SLOTS AVBL  
AND VFR FLT CAN ANTICIPATE RESTRICTIONS AND/OR DLA UP TO 45MIN IN  
AIRSPACE SOUTH OF A LINE MIVOK-OTONA-IKMOL-ANATI EXC IN OTTAWA,  
MONTREAL AND QUEBEC TERMINAL AREAS. IFR TRAINING SLOT TIMES CTC  
514-633-3211

FR:  
EN RAISON DE LA CAPACITE REDUITE DU SYSTEME, CRENEAUX  
D'ENTRAINEMENT IFR LIMITES ET FLT VFR PEUVENT ANTICIPER DES  
RESTRICTIONS ET/OU DLA JUSQU'A 45MIN DANS L'ESPACE AERIEEN AU SUD  
D'UNE LIGNE MIVOK-OTONA-IKMOL-ANATI, EXC DANS LES ZONES TERMINAL  
D'OTTAWA, MONTREAL ET QUEBEC. CRENEAUX D'ENTRAINEMENT IFR CTC  
514-633-3211)

(E2503/24 NOTAMR E2502/24  
Q) CZUL/QFAHW/IV/B0/A/000/999/4647N07124W005  
A) CYQB B) 2405061200 C) 2406142130  
D) DAILY 1200-2130  
E) CREW AND EQPT WITHIN AREA BOUNDED BY 464655N 0712431W-464659N  
0712425W-464653N 0712409W-464648N 0712420W-464655N 0712431W AND  
464705N 0712406W-464708N 0712402W-464707N 0712358W-464704N  
0712403W-464705N 0712406W  
20FT AGL 263FT ASL

FR:  
EQUIPE DE MAINT ET EQPT A L'INTERIEUR DE LA ZONE DELIMITEE PAR  
464655N 0712431W-464659N 0712425W-464653N 0712409W-464648N  
0712420W-464655N 0712431W AND 464705N 0712406W-464708N  
0712402W-464707N 0712358W-464704N 0712403W-464705N 0712406W  
20FT AGL 263FT ASL)

(E2858/24 NOTAMN  
Q) CZUL/QMRLT/IV/NBO/A/000/999/4647N07124W005  
A) CYQB B) 2405211030 C) 2406142045  
D) DAILY 1030-1200 2015-2045  
E) RWY 06/24 NOT AVBL FOR TOUCH AND GO

FR:  
RWY 06/24 NON AVBL POUR POSER DECOLLER)

(E2935/24 NOTAMN  
Q) CZUL/QLSAS/I/B0/A/000/999/4647N07124W005  
A) CYQB B) 2405231200 C) 2405232130  
E) RWY GUARD LGT RWY 06/24 U/S

FR:  
LGT DE PROTECTION DE RWY 06/24 U/S)

(E1926/24 NOTAMN  
Q) CZUL/QBCE/IV/M/AE/000/003/4647N07121W005  
A) CYQB B) 2403272201 C) 2406241900EST  
E) CRANE 464713N 0712125W APRX 5790FT BFR THR 29 AND 770FT NORTH  
EXTENDED RCL. 190FT AGL 252FT AMSL. LGTD, PAINTED.

FR:  
GRUE 464713N 0712125W APRX 5790FT BFR THR 29 ET 770FT AU NORD DU  
PROLONGEMENT DE RCL. 190FT AGL 252FT AMSL. LGTD, PEINTE.)

(E2682/24 NOTAMR E2508/24  
Q) CZUL/QPICH/I/NBO/A/000/999/4647N07124W005  
A) CYQB B) 2405131407 C) 2406142045  
D) DAILY 1300-2045  
E) DUE CONSTRUCTION

ILS RWY 06 APCH : ILS/DME MINIMA : NOT AUTH  
LOC/DME MINIMA TO READ: 760 (516) 1 RVR 50  
PUBLISHED DIST/ALT TABLE NOT VALID  
PUBLISHED CONSTANT DESCENT ANGLE NOT VALID  
CIRCLING MINIMA TO READ: CAT A AND B: 760 (516) 1 1/2  
CAT C: 760 (516) 2

RNAV (GNSS) Z RWY 06 APCH:  
LPV AND LNAV/VNAV MINIMA: NOT AUTH  
LNAV MINIMA TO READ: 760 (516) 1 RVR 50  
PUBLISHED DIST/ALT TABLE NOT VALID  
PUBLISHED CONSTANT DESCENT ANGLE NOT VALID

RNAV (RNP) Y RWY 06 APCH: ALL MINIMA: NOT AUTH

FR:  
EN RAISON DE LA CONSTRUCTION

APCH ILS PISTE 06: MINIMUM ILS/DME: NON AUTH  
MINIMUM LOC/DME DEVRAIT LIRE: 760 (516) 1 RVR 50  
TABLEAU DES DIST ET ALT PUBLIE NON VALIDE  
ANGLE DE DESCENTE CONSTANT PUBLIE NON VALIDE  
APPROCHE INDIRECTE DEVRAIT LIRE: CAT A ET B : 760 (516) 1 1/2  
CAT C: 760 (516) 2

APCH RNAV (GNSS) Z PISTE 06 : MINIMUM LPV ET LNAV/VNAV: NON AUTH  
MINIMUM LNAV DEVRAIT LIRE : 760 (516) 1 RVR 50  
TABLEAU DES DIST ET ALT PUBLIE NON VALIDE  
ANGLE DE DESCENTE CONSTANT PUBLIE NON VALIDE

APCH RNAV (RNP) Y PISTE 06 : TOUS LES MINIMUMS : NON AUTH)

(H1971/24 NOTAMN  
Q) CZUL/QCAAS/IV/B0/AE/000/290/4746N06935W200  
A) CYRI B) 2405231145 C) 2405232359  
E) MONTREAL CENTRE PERIPHERAL STATION (PAL) 125.1MHZ  
AT RIVIERE-DU-LOUP U/S

FR:  
CENTRE DE MONTREAL STATION PERIPHERIQUE (PAL) 125.1MHZ  
A RIVIERE-DU-LOUP U/S)



## JEAN LESAGE INTL - CYQB - Cert

### NOTAM

(H4366/23 NOTAMN

Q) CZXX/QADTT/IV/BO/E/000/999/5243N05321W999

A) CZUL CZQM CZQX B) 2312202144 C) 2412191600EST

E) TRIGGER NOTAM - AIP SUPPLEMENT 26/18 IN EFFECT. ADJUSTMENT TO THE CANADA AIR DEFENCE IDENTIFICATION ZONE (ADIZ).

FR:

NOTAM DECLENCHEUR - SUPPLEMENT D'AIP 26/18 EN VIGUEUR.  
MODIFICATION DE LA ZONE D'IDENTIFICATION DE DEFENSE AERIEENNE DU CANADA)

(H1939/24 NOTAMR H1928/24

Q) CZUL/QNNAS/IV/BO/AE/000/999/4642N07138W025

A) CYQB B) 2405201517 C) 2406182359

E) QUEBEC TACAN YQB 112.8MHZ/CH75X AZM U/S, DME AVBL

FR:

QUEBEC TACAN YQB 112.8MHZ/CH75X AZM U/S, DME AVBL)

(E2171/24 NOTAMR E2167/24

Q) CZUL/QMXLC/IV/M/A/000/999/4647N07124W005

A) CYQB B) 2404150930 C) 2406142130

E) TWY G AND TWY H CLSD.

FR:

TWY G ET TWY H CLSD.)

(H1572/24 NOTAMR H1549/24

Q) CZUL/QATLT/IV/NBO/AE/000/125/4647N07124W026

A) CYQB B) 2404301415 C) 2407282100EST

E) DUE TO REDUCED SYSTEM CAPACITY, LIMITED IFR TRAINING SLOTS AND VFR FLT CAN ANTICIPATE RESTRICTIONS AND/OR DLA UP TO 45MIN IN THE QUEBEC CLASS C TERMINAL AIRSPACE. ALL IFR TRAINING FLT AND VFR PHOTO SURVEY FLT PPR 1-800-633-1353.  
INFO CTC 514-633-3365.

FR:

EN RAISON DE LA CAPACITE REDUITE DU SYSTEME, CRENEAUX D'ENTRAINEMENT IFR LIMITES ET FLT VFR PEUVENT ANTICIPER RESTRICTIONS ET/OU DLA JUSQU'A 45MIN DANS L'ESPACE AERIEEN TERMINAL CLASSE C DE QUEBEC. TOUS FLT D'ENTRAINEMENT IFR ET FLT DE LEVES PHOTOGRAPHIQUES VFR PPR 1-800-633-1353.  
INFO CTC 514-633-3365.)

(E2932/24 NOTAMN

Q) CZUL/QLSAS/I/BO/A/000/999/4647N07124W005

A) CYQB B) 2405241330 C) 2405241530

E) RWY GUARD LGT RWY 06/24 AND 11/29 U/S

FR:

LGT DE PROTECTION DE RWY 06/24 ET 11/29 U/S)

(H1968/24 NOTAMR H1967/24

Q) CZUL/QACXX/IV/NBO/AE/000/035/4647N07124W016

A) CYQB B) 2405221945 C) 2405222330

E) DUE TO REDUCED SYSTEM CAPACITY, TOUCH AND GO AND IFR AND VFR TRAINING FLT NOT AUTH IN THE QUEBEC/JEAN LESAGE INTL CTL ZONE.  
INFO CTC 514-633-3365

FR:

EN RAISON DE LA CAPACITE REDUITE DU SYSTEME, POSER DECOLLER ET FLT D'ENTRAINEMENT IFR ET VFR NON AUTH DANS LA ZONE DE CTL DE QUEBEC/JEAN LESAGE INTL. INFO CTC 514-633-3365)

(V0482/24 NOTAMR V0265/24

Q) CZUL/QOLAS/IV/M/AE/000/021/4649N07130W005

A) CYQB B) 2404270500 C) 2406271300

E) OBST LGT U/S TOWER 464923N 0712939W (APRX 4.6NM NW AD) 420FT AGL, 2005FT AMSL.

FR:

OBST LGT U/S TOUR 464923N 0712939W (APRX 4.6NM NW AD) 420FT AGL, 2005FT AMSL.)

(E2859/24 NOTAMN

Q) CZUL/QMRAP/IV/NBO/A/000/999/4647N07124W005

A) CYQB B) 2405212015 C) 2406142045

D) DAILY 2015-2045

E) RWY 06/24 AVBL 30MIN PPR CTC 418-640-0707

FR:

RWY 06/24 AVBL 30MIN PPR CTC 418-640-0707)

(E2503/24 NOTAMR E2502/24

Q) CZUL/QFAHW/IV/BO/A/000/999/4647N07124W005

A) CYQB B) 2405061200 C) 2406142130

D) DAILY 1200-2130

E) CREW AND EQPT WITHIN AREA BOUNDED BY 464655N 0712431W-464659N 0712425W-464653N 0712409W-464648N 0712420W-464655N 0712431W AND 464705N 0712406W-464708N 0712402W-464707N 0712358W-464704N 0712403W-464705N 0712406W  
20FT AGL 263FT ASL

FR:  
EQUIPE DE MAINT ET EQPT A L'INTERIEUR DE LA ZONE DELIMITEE PAR  
464655N 0712431W-464659N 0712425W-464653N 0712409W-464648N  
0712420W-464655N 0712431W AND 464705N 0712406W-464708N  
0712402W-464707N 0712358W-464704N 0712403W-464705N 0712406W  
20FT AGL 263FT ASL)

(E2858/24 NOTAMN  
Q) CZUL/QMRLT/IV/NBO/A/000/999/4647N07124W005  
A) CYQB B) 2405211030 C) 2406142045  
D) DAILY 1030-1200 2015-2045  
E) RWY 06/24 NOT AVBL FOR TOUCH AND GO

FR:  
RWY 06/24 NON AVBL POUR POSER DECOLLER)

(V0449/24 NOTAMR V0074/24  
Q) CZUL/QOLAS/IV/M/AE/000/022/4649N07130W005  
A) CYQB B) 2404220413 C) 2407212100  
E) OBST LGT U/S TOWER 464922N 0712945W (APRX 4.6NM NW AD) 547FT AGL,  
2132FT AMSL.

FR:  
OBST LGT U/S TOUR 464922N 0712945W (APRX 4.6NM NW AD) 547FT AGL,  
2132FT AMSL.)

(H1971/24 NOTAMN  
Q) CZUL/QCAAS/IV/BO/AE/000/290/4746N06935W200  
A) CYRI B) 2405231145 C) 2405232359  
E) MONTREAL CENTRE PERIPHERAL STATION (PAL) 125.1MHZ  
AT RIVIERE-DU-LOUP U/S

FR:  
CENTRE DE MONTREAL STATION PERIPHERIQUE (PAL) 125.1MHZ  
A RIVIERE-DU-LOUP U/S)

(H4360/23 NOTAMN  
Q) CZUL/QAFTT/IV/BO/E/000/999/5440N06941W999  
A) CZUL B) 2312201537 C) 2412191600EST  
E) TRIGGER NOTAM - AIP SUPPLEMENT 76/23 IN EFFECT - AUTOLAND  
PROCEDURES NOT RECOMMENDED IN RUNWAYS NOT COVERED BY ISED'S  
DESIGNATED 5G EXCLUSION AND PROTECTION ZONES

FR:  
NOTAM DECLENCHEUR - SUPPLEMENT D'AIP 76/23 EN VIGUEUR -  
PROCEDURES D'ATTERRISSAGE AUTOMATIQUE NON RECOMMANDEES SUR LES  
PISTES QUI NE FIGURENT PAS DANS UNE ZONE DESIGNEE D'EXCLUSION ET  
DE PROTECTION 5G DE L'ISDE)

(E2168/24 NOTAMN  
Q) CZUL/QMRLT/IV/NBO/A/000/999/4647N07124W005  
A) CYQB B) 2404151200 C) 2406142130  
E) RWY 06/24 NOT AVBL FOR ACFT TYPE A-340-600, A-350-900-1000,  
B777-300 AND B787-10

FR:  
RWY 06/24 NON AVBL POUR TYPE ACFT A-340-600, A-350-900-1000,  
B777-300 AND B787-10)

(H1804/24 NOTAMN  
Q) CZUL/QARCH/IV/BO/E/000/999/5440N06941W999  
A) CZUL B) 2505160901 C) PERM  
E) AMEND PUBLICATIONS: AMEND MANDATORY IFR ROUTES:  
DELETE: CYOW H AND L DEP TO KBOS RNAV KODEX EPMOK SSENA BUGSY  
OOSHN ARR  
ADD: CYOW H AND L DEP TO KBOS RNAV KODEX EPMOK SSENA BUGSY ENE  
OOSHN ARR

FR:  
MODIFIEZ PUBLICATIONS: SYSTEME DE ROUTES IFR OBLIGATOIRES:  
RETIRER: CYOW H ET L DEP VERS KBOS RNAV KODEX EPMOK SSENA BUGSY  
OOSHN ARR  
AJOUTEZ: CYOW H ET L DEP VERS KBOS RNAV KODEX EPMOK SSENA BUGSY  
ENE OOSHN ARR)

(H1897/24 NOTAMN  
Q) CZUL/QWYTT/IV/BO/W/000/030/5440N06941W999  
A) CZUL B) 2405260000 C) 2412191600EST  
E) TRIGGER NOTAM - AIP SUPPLEMENT 35/24 WEF 26 MAY 2024 FLIGHT  
OPERATIONS: FOREST SPRAYING ABITIBI, LAC SAINT-JEAN, NORTH SHORE  
OF THE ST. LAWRENCE, BAS-SAINT-LAURENT REGION, AND GASPE/SIE

FR:  
NOTAM DECLENCHEUR - SUPPLEMENT D'AIP 35/24 WEF 26 MAI 2024.  
OPERATIONS AERIENNES: PULVERISATION FORESTIERE EN ABITIBI LAC  
SAINT-JEAN, RIVE NORD DU SAINT-LAURENT, BAS-SAINT-LAURENT ET  
GASPE/SIE  
F) SFC G) 3000FT AMSL)

(E2933/24 NOTAMN  
Q) CZUL/QLEAS/IV/BO/A/000/999/4647N07124W005  
A) CYQB B) 2405241330 C) 2405241530  
E) REDL 11/29 U/S

FR:  
REDL 11/29 U/S)

(H1259/24 NOTAMR H0064/24  
Q) CZXX/QOEXX/IV/NBO/E/000/999/5243N05321W999  
A) CZUL CZQX CZQM B) 2404081701 C) 2407041700EST  
E) AIRSPACE SECURITY WARNING ISSUED BY THE DEPARTMENT OF TRANSPORT  
IN RESPONSE TO THE SECURITY SITUATION IN LEBANON. CANADIAN AIR  
OPERATORS AND OWNERS OF ACFT REGISTERED IN CANADA ARE ADVISED TO  
TAKE ALL POTENTIAL RISK INFO INTO ACCOUNT IN THEIR RISK  
ASSESSMENT AND ROUTING DECISIONS WHEN OPERATING IN LEBANESE  
AIRSPACE AND FIR BEIRUT (OLBB) DUE TO POTENTIAL RISK TO AVIATION  
FROM MIL ACT.

FR:  
AVERTISSEMENT RELATIF A LA SECURITE DE L'ESPACE AERIEN EMIS PAR  
LE MINISTERE DES TRANSPORTS EN REPONSE A LA SITUATION DE SECURITE  
EN LIBAN. ON RECOMMANDE AUX EXPLOITANTS AERIENS CANADIENS ET  
PROPRIETAIRES D'AVIONS IMMATRICULES AU CANADA DE PRENDRE EN  
COMPTE TOUTES LES INFO SUR LES RISQUES POTENTIELS DANS LEUR  
EVALUATION DES RISQUES ET LEURS DECISIONS D'ITINERAIRE LORSQU'ILS  
OPERENT DANS L'ESPACE AERIEN LIBANAIS ET LA REGION D'INFORMATION  
DE VOL DE BEYROUTH (OLBB), EN RAISON DU RISQUE POTENTIEL POUR  
L'AVIATION LIE A L'ACT MIL)

(E2861/24 NOTAMN  
Q) CZUL/QMDCH/IV/NBO/A/000/999/4647N07124W005  
A) CYQB B) 2405211300 C) 2406142045  
D) DAILY 1300-2045  
E) FIRST 2500FT RWY 06 CLSD DUE CONST  
THR 06 IS DISPLACED BY 2500FT  
DECLARED DIST WITH RWY 06/24 LENGTH REDUCED:  
RWY 06 TORA 6500 TODA 7484 ASDA 6500 LDA 6500  
RWY 24 TORA 6500 TODA 6500 ASDA 6500 LDA 6500

FR:  
PREMIERS 2500FT RWY 06 CLSD CAUSE CONST  
THR 06 EST DECALE DE 2500FT.  
DIST DECLAREES AVEC LONGUEUR REDUITE RWY 06/24:  
RWY 06 TORA 6500 TODA 7484 ASDA 6500 LDA 6500  
RWY 24 TORA 6500 TODA 6500 ASDA 6500 LDA 6500)

(E2528/24 NOTAMN  
Q) CZUL/QIGAS/I/NBO/A/000/999/4647N07124W005  
A) CYQB B) 2405061205 C) 2406212130  
E) ILS GP RWY 06 U/S

FR:  
ILS GP RWY 06 U/S)

(H1097/24 NOTAMN  
Q) CZUL/QARCH/IV/BO/E/000/999/5440N06941W999  
A) CZUL B) 2403271922 C) PERM  
E) AMEND PUBLICATIONS: AMEND MANDATORY IFR ROUTES:  
DELETE: E-BOUND L OLABA RNAV OLABA T791 ALONI DAVDA SSENA TALNO  
T721 TOXAL  
ADD: E-BOUND L OLABA RNAV OLABA T739 EPTUL T721 TOXAL

FR:  
MODIFIEZ PUBLICATIONS: SYSTEME DE ROUTES IFR OBLIGATOIRES:  
RETIRER: DIRECTION E L OLABA RNAV OLABA T791 ALONI DAVDA SSENA  
TALNO T721 TOXAL  
AJOUTEZ: DIRECTION E L OLABA RNAV OLABA T739 EPTUL T721 TOXAL)

(E2860/24 NOTAMN  
Q) CZUL/QMRLC/IV/NBO/A/000/999/4647N07124W005  
A) CYQB B) 2405211200 C) 2406142130  
D) DAILY 1200-1300 2045-2130  
E) RWY 06/24 CLSD AVBL AS TWY BTN RWY 11/29 AND TWY E.

FR:  
RWY 06/24 CLSD AVBL COMME TWY BTN RWY 11/29 ET TWY E.)

(E2934/24 NOTAMN  
Q) CZUL/QLYAS/IV/M/A/000/999/4647N07124W005  
A) CYQB B) 2405241330 C) 2405241530  
E) TWY EDGE LGT A, B, D, E, AND RAMP 1 U/S

FR:  
TWY EDGE LGT A, B, D, E, ET RAMPE 1 U/S)

(H1974/24 NOTAMN  
Q) CZUL/QXXX/IV/NBO/E/000/999/4638N07245W250  
A) CZUL B) 2405221700 C) 2405230300  
E) DUE TO REDUCED SYSTEM CAPACITY, LIMITED IFR TRAINING SLOTS AVBL  
AND VFR FLT CAN ANTICIPATE RESTRICTIONS AND/OR DLA UP TO 45MIN IN  
AIRSPACE SOUTH OF A LINE MIVOK-OTONA-IKMOL-ANATI EXC IN OTTAWA,  
MONTREAL AND QUEBEC TERMINAL AREAS. IFR TRAINING SLOT TIMES CTC  
514-633-3211

FR:  
EN RAISON DE LA CAPACITE REDUITE DU SYSTEME, CRENEAUX  
D'ENTRAINEMENT IFR LIMITES ET FLT VFR PEUVENT ANTICIPER DES  
RESTRICTIONS ET/OU DLA JUSQU'A 45MIN DANS L'ESPACE AERIEN AU SUD  
D'UNE LIGNE MIVOK-OTONA-IKMOL-ANATI, EXC DANS LES ZONES TERMINAL  
D'OTTAWA, MONTREAL ET QUEBEC. CRENEAUX D'ENTRAINEMENT IFR CTC  
514-633-3211)

(E2935/24 NOTAMN  
Q) CZUL/QLSAS/I/BO/A/000/999/4647N07124W005  
A) CYQB B) 2405231200 C) 2405232130  
E) RWY GUARD LGT RWY 06/24 U/S

FR:  
LGT DE PROTECTION DE RWY 06/24 U/S)

(E1926/24 NOTAMN  
Q) CZUL/QOBCE/IV/M/AE/000/003/4647N07121W005  
A) CYQB B) 2403272201 C) 2406241900EST  
E) CRANE 464713N 0712125W APRX 5790FT BFR THR 29 AND 770FT NORTH  
EXTENDED RCL. 190FT AGL 252FT AMSL. LGTD, PAINTED.

FR:  
GRUE 464713N 0712125W APRX 5790FT BFR THR 29 ET 770FT AU NORD DU  
PROLONGEMENT DE RCL. 190FT AGL 252FT AMSL. LGTD, PEINTE.)

(S2731/24 NOTAMN  
Q) CZUL/QFAXX/IV/NBO/A/000/999/4647N07124W005  
A) CYQB B) 2405221142 C) 2405221942  
E) RSC 06 6/6/6 DRY, DRY, DRY. VALID MAY 22 1142 - MAY 22 1942.

RSC 24 6/6/6 DRY, DRY, DRY. VALID MAY 22 1142 - MAY 22 1942.

RSC 11 6/6/6 DRY, DRY, DRY. VALID MAY 22 1142 - MAY 22 1942.

RSC 29 6/6/6 DRY, DRY, DRY. VALID MAY 22 1142 - MAY 22 1942.

ADDN NON-GRF/TALPA INFO:  
CRFI 06 NR/NR/NR.  
CRFI 24 NR/NR/NR.  
CRFI 11 NR/NR/NR.  
CRFI 29 NR/NR/NR.

RMK: TWY ALL TWY, DRY.  
RMK: APN ALL APRON, DRY.

FR:  
RSC 06 6/6/6 SECHE, SECHE, SECHE. VALIDE MAY 22 1142 - MAY 22  
1942.

RSC 24 6/6/6 SECHE, SECHE, SECHE. VALIDE MAY 22 1142 - MAY 22  
1942.

RSC 11 6/6/6 SECHE, SECHE, SECHE. VALIDE MAY 22 1142 - MAY 22

1942.

RSC 29 6/6/6 SECHE, SECHE, SECHE. VALIDE MAY 22 1142 - MAY 22 1942.

INFO ADDN NON-GRF/TALPA:

CRFI 06 NR/NR/NR.

CRFI 24 NR/NR/NR.

CRFI 11 NR/NR/NR.

CRFI 29 NR/NR/NR.

RMK: TWY ALL TWY, SECHE.

RMK: APN ALL APRON, SECHE.)

(E2682/24 NOTAMR E2508/24

Q) CZUL/QPICH/I/NB0/A/000/999/4647N07124W005

A) CYQB B) 2405131407 C) 2406142045

D) DAILY 1300-2045

E) DUE CONSTRUCTION

ILS RWY 06 APCH : ILS/DME MINIMA : NOT AUTH

LOC/DME MINIMA TO READ: 760 (516) 1 RVR 50

PUBLISHED DIST/ALT TABLE NOT VALID

PUBLISHED CONSTANT DESCENT ANGLE NOT VALID

CIRCLING MINIMA TO READ: CAT A AND B: 760 (516) 1 1/2

CAT C: 760 (516) 2

RNAV (GNSS) Z RWY 06 APCH:

LPV AND LNAV/VNAV MINIMA: NOT AUTH

LNAV MINIMA TO READ: 760 (516) 1 RVR 50

PUBLISHED DIST/ALT TABLE NOT VALID

PUBLISHED CONSTANT DESCENT ANGLE NOT VALID

RNAV (RNP) Y RWY 06 APCH: ALL MINIMA: NOT AUTH

FR:

EN RAISON DE LA CONSTRUCTION

APCH ILS PISTE 06: MINIMUM ILS/DME: NON AUTH

MINIMUM LOC/DME DEVRAIT LIRE: 760 (516) 1 RVR 50

TABLEAU DES DIST ET ALT PUBLIE NON VALIDE

ANGLE DE DESCENTE CONSTANT PUBLIE NON VALIDE

APPROCHE INDIRECTE DEVRAIT LIRE: CAT A ET B : 760 (516) 1 1/2

CAT C: 760 (516) 2

APCH RNAV (GNSS) Z PISTE 06 : MINIMUM LPV ET LNAV/VNAV: NON AUTH

MINIMUM LNAV DEVRAIT LIRE : 760 (516) 1 RVR 50

TABLEAU DES DIST ET ALT PUBLIE NON VALIDE

ANGLE DE DESCENTE CONSTANT PUBLIE NON VALIDE

APCH RNAV (RNP) Y PISTE 06 : TOUS LES MINIMUMS : NON AUTH)

## CAPITALE HELICOPTERE INC - CCH7 - Cert

### NOTAM

(H4360/23 NOTAMN

Q) CZUL/QAFTT/IV/B0/E/000/999/5440N06941W999

A) CZUL B) 2312201537 C) 2412191600EST

E) TRIGGER NOTAM - AIP SUPPLEMENT 76/23 IN EFFECT - AUTOLAND PROCEDURES NOT RECOMMENDED IN RUNWAYS NOT COVERED BY ISED'S DESIGNATED 5G EXCLUSION AND PROTECTION ZONES

FR:

NOTAM DECLENCHEUR - SUPPLEMENT D'AIP 76/23 EN VIGUEUR - PROCEDURES D'ATTERRISSAGE AUTOMATIQUE NON RECOMMANDEES SUR LES PISTES QUI NE FIGURENT PAS DANS UNE ZONE DESIGNEE D'EXCLUSION ET DE PROTECTION 5G DE L'ISDE)

(E2168/24 NOTAMN

Q) CZUL/QMRLT/IV/NB0/A/000/999/4647N07124W005

A) CYQB B) 2404151200 C) 2406142130

E) RWY 06/24 NOT AVBL FOR ACFT TYPE A-340-600, A-350-900-1000, B777-300 AND B787-10

FR:

RWY 06/24 NON AVBL POUR TYPE ACFT A-340-600, A-350-900-1000, B777-300 AND B787-10)

(H4366/23 NOTAMN

Q) CZXX/QADTT/IV/B0/E/000/999/5243N05321W999

A) CZUL CZQM CZQX B) 2312202144 C) 2412191600EST

E) TRIGGER NOTAM - AIP SUPPLEMENT 26/18 IN EFFECT. ADJUSTMENT TO THE CANADA AIR DEFENCE IDENTIFICATION ZONE (ADIZ).

FR:

NOTAM DECLENCHEUR - SUPPLEMENT D'AIP 26/18 EN VIGUEUR. MODIFICATION DE LA ZONE D'IDENTIFICATION DE DEFENSE AERIENNE DU CANADA)

(H1804/24 NOTAMN

Q) CZUL/QARCH/IV/B0/E/000/999/5440N06941W999

A) CZUL B) 2505160901 C) PERM

E) AMEND PUBLICATIONS: AMEND MANDATORY IFR ROUTES:

DELETE: CYOW H AND L DEP TO KBOS RNAV KODEX EPMOK SSENA BUGSY OOSH ARR

ADD: CYOW H AND L DEP TO KBOS RNAV KODEX EPMOK SSENA BUGSY ENE OOSH ARR

FR:

MODIFIEZ PUBLICATIONS: SYSTEME DE ROUTES IFR OBLIGATOIRES: RETIRER: CYOW H ET L DEP VERS KBOS RNAV KODEX EPMOK SSENA BUGSY OOSH ARR  
AJOUTEZ: CYOW H ET L DEP VERS KBOS RNAV KODEX EPMOK SSENA BUGSY ENE OOSH ARR)

(H1939/24 NOTAMR H1928/24

Q) CZUL/QNNAS/IV/B0/AE/000/999/4642N07138W025

A) CYQB B) 2405201517 C) 2406182359

E) QUEBEC TACAN YQB 112.8MHZ/CH75X AZM U/S, DME AVBL

FR:

QUEBEC TACAN YQB 112.8MHZ/CH75X AZM U/S, DME AVBL)

(E2171/24 NOTAMR E2167/24

Q) CZUL/QMXLC/IV/M/A/000/999/4647N07124W005

A) CYQB B) 2404150930 C) 2406142130

E) TWY G AND TWY H CLSD.

FR:

TWY G ET TWY H CLSD.)

(H1572/24 NOTAMR H1549/24

Q) CZUL/QATLT/IV/NB0/AE/000/125/4647N07124W026

A) CYQB B) 2404301415 C) 2407282100EST

E) DUE TO REDUCED SYSTEM CAPACITY, LIMITED IFR TRAINING SLOTS AND VFR FLT CAN ANTICIPATE RESTRICTIONS AND/OR DLA UP TO 45MIN IN THE QUEBEC CLASS C TERMINAL AIRSPACE. ALL IFR TRAINING FLT AND VFR PHOTO SURVEY FLT PPR 1-800-633-1353.  
INFO CTC 514-633-3365.

FR:

EN RAISON DE LA CAPACITE REDUITE DU SYSTEME, CRENEAUX D'ENTRAINEMENT IFR LIMITES ET FLT VFR PEUVENT ANTICIPER RESTRICTIONS ET/OU DLA JUSQU'A 45MIN DANS L'ESPACE AERIEN TERMINAL CLASSE C DE QUEBEC. TOUS FLT D'ENTRAINEMENT IFR ET FLT DE LEVES PHOTOGRAPHIQUES VFR PPR 1-800-633-1353.  
INFO CTC 514-633-3365.)

(H1897/24 NOTAMN

Q) CZUL/QWYTT/IV/B0/W/000/030/5440N06941W999

A) CZUL B) 2405260000 C) 2412191600EST

E) TRIGGER NOTAM - AIP SUPPLEMENT 35/24 WEF 26 MAY 2024 FLIGHT OPERATIONS: FOREST SPRAYING ABITIBI, LAC SAINT-JEAN, NORTH SHORE OF THE ST. LAWRENCE, BAS-SAINT-LAURENT REGION, AND GASPESIE

FR:

NOTAM DECLENCHEUR - SUPPLEMENT D'AIP 35/24 WEF 26 MAI 2024. OPERATIONS AERIENNES: PULVERISATION FORESTIERE EN ABITIBI LAC

SAINT-JEAN, RIVE NORD DU SAINT-LAURENT, BAS-SAINT-LAURENT ET  
GASPESIE  
F) SFC G) 3000FT AMSL)

(E2932/24 NOTAMN  
Q) CZUL/QLSAS/I/BO/A/000/999/4647N07124W005  
A) CYQB B) 2405241330 C) 2405241530  
E) RWY GUARD LGT RWY 06/24 AND 11/29 U/S

FR:  
LGT DE PROTECTION DE RWY 06/24 ET 11/29 U/S)

(E2933/24 NOTAMN  
Q) CZUL/QLEAS/IV/BO/A/000/999/4647N07124W005  
A) CYQB B) 2405241330 C) 2405241530  
E) REDL 11/29 U/S

FR:  
REDL 11/29 U/S)

(H1259/24 NOTAMR H0064/24  
Q) CZXX/QOEXX/IV/NBO/E/000/999/5243N05321W999  
A) CZUL CZQX CZQM B) 2404081701 C) 2407041700EST  
E) AIRSPACE SECURITY WARNING ISSUED BY THE DEPARTMENT OF TRANSPORT  
IN RESPONSE TO THE SECURITY SITUATION IN LEBANON. CANADIAN AIR  
OPERATORS AND OWNERS OF ACFT REGISTERED IN CANADA ARE ADVISED TO  
TAKE ALL POTENTIAL RISK INFO INTO ACCOUNT IN THEIR RISK  
ASSESSMENT AND ROUTING DECISIONS WHEN OPERATING IN LEBANESE  
AIRSPACE AND FIR BEIRUT (OLBB) DUE TO POTENTIAL RISK TO AVIATION  
FROM MIL ACT.

FR:  
AVERTISSEMENT RELATIF A LA SECURITE DE L'ESPACE AERIEN EMIS PAR  
LE MINISTERE DES TRANSPORTS EN REPONSE A LA SITUATION DE SECURITE  
EN LIBAN. ON RECOMMANDE AUX EXPLOITANTS AERIENS CANADIENS ET  
PROPRIETAIRES D'AVIONS IMMATRICULES AU CANADA DE PRENDRE EN  
COMPTE TOUTES LES INFO SUR LES RISQUES POTENTIELS DANS LEUR  
EVALUATION DES RISQUES ET LEURS DECISIONS D'ITINERAIRE LORSQU'ILS  
OPERENT DANS L'ESPACE AERIEN LIBANAIS ET LA REGION D'INFORMATION  
DE VOL DE BEYROUTH (OLBB), EN RAISON DU RISQUE POTENTIEL POUR  
L'AVIATION LIE A L'ACT MIL)

(H1968/24 NOTAMR H1967/24  
Q) CZUL/QACXX/IV/NBO/AE/000/035/4647N07124W016  
A) CYQB B) 2405221945 C) 2405222330  
E) DUE TO REDUCED SYSTEM CAPACITY, TOUCH AND GO AND IFR AND VFR  
TRAINING FLT NOT AUTH IN THE QUEBEC/JEAN LESAGE INTL CTL ZONE.  
INFO CTC 514-633-3365

FR:  
EN RAISON DE LA CAPACITE REDUITE DU SYSTEME, POSER DECOLLER ET  
FLT D'ENTRAINEMENT IFR ET VFR NON AUTH DANS LA ZONE DE CTL DE  
QUEBEC/JEAN LESAGE INTL. INFO CTC 514-633-3365)

(E2861/24 NOTAMN  
Q) CZUL/QMDCH/IV/NBO/A/000/999/4647N07124W005  
A) CYQB B) 2405211300 C) 2406142045  
D) DAILY 1300-2045  
E) FIRST 2500FT RWY 06 CLSD DUE CONST  
THR 06 IS DISPLACED BY 2500FT  
DECLARED DIST WITH RWY 06/24 LENGTH REDUCED:  
RWY 06 TORA 6500 TODA 7484 ASDA 6500 LDA 6500  
RWY 24 TORA 6500 TODA 6500 ASDA 6500 LDA 6500

FR:  
PREMIERS 2500FT RWY 06 CLSD CAUSE CONST  
THR 06 EST DECALE DE 2500FT.  
DIST DECLAREES AVEC LONGUEUR REDUITE RWY 06/24:  
RWY 06 TORA 6500 TODA 7484 ASDA 6500 LDA 6500  
RWY 24 TORA 6500 TODA 6500 ASDA 6500 LDA 6500)

(E2528/24 NOTAMN  
Q) CZUL/QIGAS/I/NBO/A/000/999/4647N07124W005  
A) CYQB B) 2405061205 C) 2406212130  
E) ILS GP RWY 06 U/S

FR:  
ILS GP RWY 06 U/S)

(H1097/24 NOTAMN  
Q) CZUL/QARCH/IV/BO/E/000/999/5440N06941W999  
A) CZUL B) 2403271922 C) PERM  
E) AMEND PUBLICATIONS: AMEND MANDATORY IFR ROUTES:  
DELETE: E-BOUND L OLABA RNAV OLABA T791 ALONI DAVDA SSENA TALNO  
T721 TOXAL  
ADD: E-BOUND L OLABA RNAV OLABA T739 EPTUL T721 TOXAL

FR:  
MODIFIEZ PUBLICATIONS: SYSTEME DE ROUTES IFR OBLIGATOIRES:  
RETIRER: DIRECTION E L OLABA RNAV OLABA T791 ALONI DAVDA SSENA  
TALNO T721 TOXAL  
AJOUTEZ: DIRECTION E L OLABA RNAV OLABA T739 EPTUL T721 TOXAL)

(E2860/24 NOTAMN  
Q) CZUL/QMRLC/IV/NBO/A/000/999/4647N07124W005  
A) CYQB B) 2405211200 C) 2406142130  
D) DAILY 1200-1300 2045-2130  
E) RWY 06/24 CLSD AVBL AS TWY BTN RWY 11/29 AND TWY E.

FR:  
RWY 06/24 CLSD AVBL COMME TWY BTN RWY 11/29 ET TWY E.)

(E2859/24 NOTAMN  
Q) CZUL/QMRAP/IV/NBO/A/000/999/4647N07124W005  
A) CYQB B) 2405212015 C) 2406142045  
D) DAILY 2015-2045  
E) RWY 06/24 AVBL 30MIN PPR CTC 418-640-0707

FR:  
RWY 06/24 AVBL 30MIN PPR CTC 418-640-0707)

(E2934/24 NOTAMN  
Q) CZUL/QLYAS/IV/M/A/000/999/4647N07124W005  
A) CYQB B) 2405241330 C) 2405241530  
E) TWY EDGE LGT A, B, D, E, AND RAMP 1 U/S

FR:  
TWY EDGE LGT A, B, D, E, ET RAMPE 1 U/S)

(H1974/24 NOTAMN  
Q) CZUL/QXXX/IV/NBO/E/000/999/4638N07245W250  
A) CZUL B) 2405221700 C) 2405230300  
E) DUE TO REDUCED SYSTEM CAPACITY, LIMITED IFR TRAINING SLOTS AVBL  
AND VFR FLT CAN ANTICIPATE RESTRICTIONS AND/OR DLA UP TO 45MIN IN  
AIRSPACE SOUTH OF A LINE MIVOK-OTONA-IKMOL-ANATI EXC IN OTTAWA,  
MONTREAL AND QUEBEC TERMINAL AREAS. IFR TRAINING SLOT TIMES CTC  
514-633-3211

FR:  
EN RAISON DE LA CAPACITE REDUITE DU SYSTEME, CRENEAUX  
D'ENTRAINEMENT IFR LIMITES ET FLT VFR PEUVENT ANTICIPER DES  
RESTRICTIONS ET/OU DLA JUSQU'A 45MIN DANS L'ESPACE AERIEEN AU SUD  
D'UNE LIGNE MIVOK-OTONA-IKMOL-ANATI, EXC DANS LES ZONES TERMINAL  
D'OTTAWA, MONTREAL ET QUEBEC. CRENEAUX D'ENTRAINEMENT IFR CTC  
514-633-3211)

(E2503/24 NOTAMR E2502/24  
Q) CZUL/QFAHW/IV/BO/A/000/999/4647N07124W005  
A) CYQB B) 2405061200 C) 2406142130  
D) DAILY 1200-2130  
E) CREW AND EQPT WITHIN AREA BOUNDED BY 464655N 0712431W-464659N  
0712425W-464653N 0712409W-464648N 0712420W-464655N 0712431W AND  
464705N 0712406W-464708N 0712402W-464707N 0712358W-464704N  
0712403W-464705N 0712406W  
20FT AGL 263FT ASL

FR:  
EQUIPE DE MAINT ET EQPT A L'INTERIEUR DE LA ZONE DELIMITEE PAR  
464655N 0712431W-464659N 0712425W-464653N 0712409W-464648N  
0712420W-464655N 0712431W AND 464705N 0712406W-464708N  
0712402W-464707N 0712358W-464704N 0712403W-464705N 0712406W  
20FT AGL 263FT ASL)

(E2858/24 NOTAMN  
Q) CZUL/QMRLT/IV/NBO/A/000/999/4647N07124W005  
A) CYQB B) 2405211030 C) 2406142045  
D) DAILY 1030-1200 2015-2045  
E) RWY 06/24 NOT AVBL FOR TOUCH AND GO

FR:  
RWY 06/24 NON AVBL POUR POSER DECOLLER)

(E2935/24 NOTAMN  
Q) CZUL/QLSAS/I/BO/A/000/999/4647N07124W005  
A) CYQB B) 2405231200 C) 2405232130  
E) RWY GUARD LGT RWY 06/24 U/S

FR:  
LGT DE PROTECTION DE RWY 06/24 U/S)

(E1926/24 NOTAMN  
Q) CZUL/QQBCE/IV/M/AE/000/003/4647N07121W005  
A) CYQB B) 2403272201 C) 2406241900EST  
E) CRANE 464713N 0712125W APRX 5790FT BFR THR 29 AND 770FT NORTH  
EXTENDED RCL. 190FT AGL 252FT AMSL. LGTD, PAINTED.

FR:  
GRUE 464713N 0712125W APRX 5790FT BFR THR 29 ET 770FT AU NORD DU  
PROLONGEMENT DE RCL. 190FT AGL 252FT AMSL. LGTD, PEINTE.)

(E2682/24 NOTAMR E2508/24  
Q) CZUL/QPICH/I/NBO/A/000/999/4647N07124W005  
A) CYQB B) 2405131407 C) 2406142045  
D) DAILY 1300-2045  
E) DUE CONSTRUCTION

ILS RWY 06 APCH : ILS/DME MINIMA : NOT AUTH  
LOC/DME MINIMA TO READ: 760 (516) 1 RVR 50  
PUBLISHED DIST/ALT TABLE NOT VALID  
PUBLISHED CONSTANT DESCENT ANGLE NOT VALID  
CIRCLING MINIMA TO READ: CAT A AND B: 760 (516) 1 1/2  
CAT C: 760 (516) 2

RNAV (GNSS) Z RWY 06 APCH:  
LPV AND LNAV/VNAV MINIMA: NOT AUTH  
LNAV MINIMA TO READ: 760 (516) 1 RVR 50  
PUBLISHED DIST/ALT TABLE NOT VALID  
PUBLISHED CONSTANT DESCENT ANGLE NOT VALID

RNAV (RNP) Y RWY 06 APCH: ALL MINIMA: NOT AUTH

FR:  
EN RAISON DE LA CONSTRUCTION

APCH ILS PISTE 06: MINIMUM ILS/DME: NON AUTH  
MINIMUM LOC/DME DEVRAIT LIRE: 760 (516) 1 RVR 50  
TABLEAU DES DIST ET ALT PUBLIE NON VALIDE  
ANGLE DE DESCENTE CONSTANT PUBLIE NON VALIDE  
APPROCHE INDIRECTE DEVRAIT LIRE: CAT A ET B : 760 (516) 1 1/2  
CAT C: 760 (516) 2

APCH RNAV (GNSS) Z PISTE 06 : MINIMUM LPV ET LNAV/VNAV: NON AUTH  
MINIMUM LNAV DEVRAIT LIRE : 760 (516) 1 RVR 50  
TABLEAU DES DIST ET ALT PUBLIE NON VALIDE  
ANGLE DE DESCENTE CONSTANT PUBLIE NON VALIDE

APCH RNAV (RNP) Y PISTE 06 : TOUS LES MINIMUMS : NON AUTH)

(H1971/24 NOTAMN  
Q) CZUL/QCAAS/IV/BO/AE/000/290/4746N06935W200  
A) CYRI B) 2405231145 C) 2405232359  
E) MONTREAL CENTRE PERIPHERAL STATION (PAL) 125.1MHZ  
AT RIVIERE-DU-LOUP U/S

FR:  
CENTRE DE MONTREAL STATION PERIPHERIQUE (PAL) 125.1MHZ  
A RIVIERE-DU-LOUP U/S)